



DIVISION OF FAMILY RESOURCES

Statewide Monthly Management Report April 2022

State of Indiana

Eric Holcomb
Governor

Family and Social Services Administration

Dan Rusyniak, MD
Secretary

Division of Family Resources

Adrienne Shields
Director

For questions regarding data on this report contact:
office.Communications@fssa.IN.gov



State of Indiana

Published May 2022



DIVISION OF FAMILY RESOURCES

Monthly Management Report

Reporting Month: April 2022

Location: Statewide

TEMPORARY ASSISTANCE FOR NEEDY FAMILIES (TANF)

Child-Only and One-Parent Families	April 2022	March 2022	April 2021	Annual Change
Number of families receiving TANF Grants	3,817	4,109	7,019	-45.62%
Total number of grant recipients	7,598	8,339	15,654	-51.46%
Number of adult grant recipients	726	894	3,233	-77.54%
Number of child grant recipients	6,872	7,445	12,421	-44.67%
Total payments	\$738,656	\$805,236	\$1,470,787	-49.78%
Average payment per case	\$193.52	\$195.97	\$209.54	-7.65%
Average payment per recipient	\$97.22	\$96.56	\$93.96	3.47%
Number of cases with benefits reduced to zero	118	125	482	-75.52%
Number of recipients with benefits reduced to zero	229	271	1,246	-81.62%
Number of adult recipients with benefit reduced to zero	45	59	355	-87.32%
Number of child recipients with benefit reduced to zero	184	212	891	-79.35%

Two-Parent Families	April 2022	March 2022	April 2021	Annual Change
Number of families receiving TANF Grants	223	257	703	-68.28%
Total number of grant recipients	770	865	2,311	-66.68%
Number of adult grant recipients	253	285	718	-64.76%
Number of child grant recipients	517	580	1,593	-67.55%
Total payments	\$65,190	\$74,231	\$185,338	-64.83%
Average payment per case	\$292.33	\$288.84	\$263.64	10.88%
Average payment per recipient	\$84.66	\$85.82	\$80.20	5.57%
Number of cases with benefits reduced to zero	2	2	55	-96.36%
Number of recipients with benefits reduced to zero	10	10	229	-95.63%
Number of adult recipients with benefit reduced to zero	4	4	74	-94.59%
Number of child recipients with benefit reduced to zero	6	6	155	-96.13%

Note:

For August 2021, a one time payment of \$400 per recipient was included in the Total payments and Average payments.
 TANF section rules changed to reflect Federal reporting logic effective September 2021.

Source:



DIVISION OF FAMILY RESOURCES

Monthly Management Report

Reporting Month: April 2022

Location: Statewide

TANF - APPLICATIONS

	April 2022	March 2022	April 2021	Annual Change
Number of Applications	3,136	3,421	2,900	8.14%



DIVISION OF FAMILY RESOURCES

Monthly Management Report

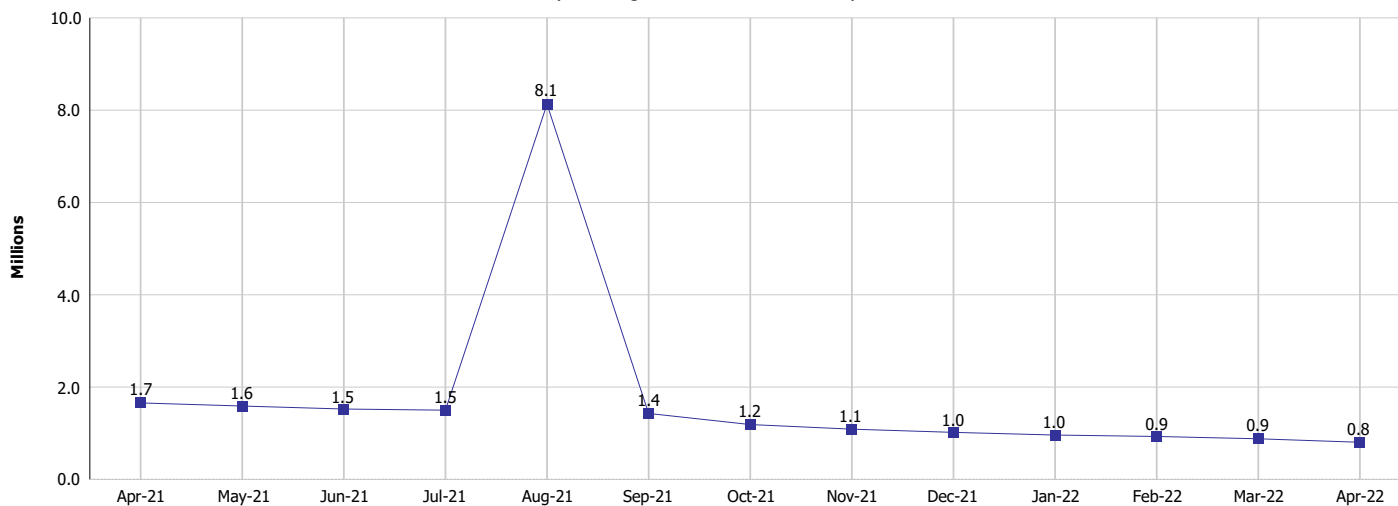
Reporting Month: April 2022

Location: Statewide

TEMPORARY ASSISTANCE FOR NEEDY FAMILIES (TANF)

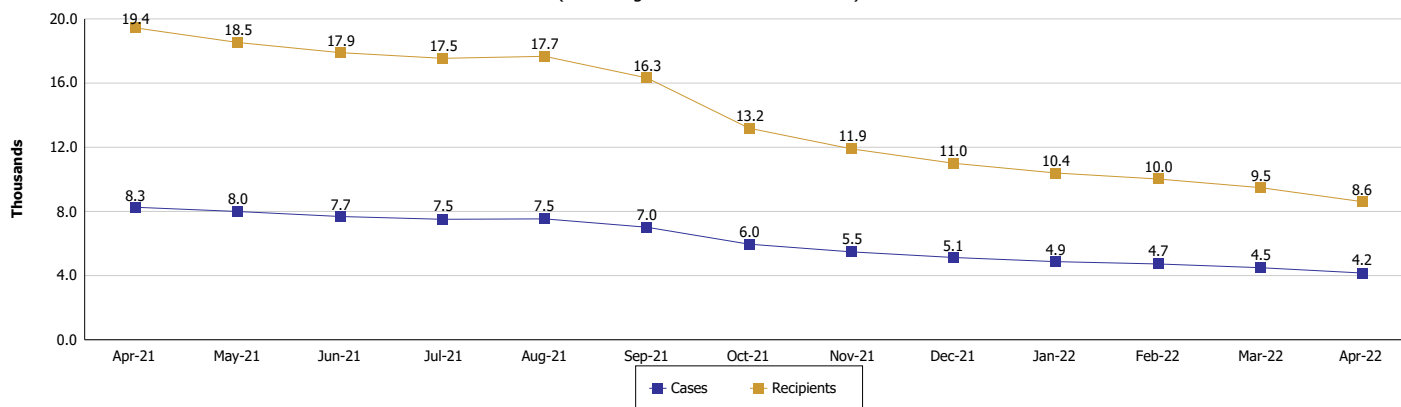
TANF Cash Assistance

(TANF Regular and TANF Two-Parent)



TANF Cases and Recipients

(TANF Regular and TANF Two-Parent)



Note:

For August 2021, a one time payment of \$400 per recipient was included in the Total payments and Average payments. TANF section rules changed to reflect Federal reporting logic effective September 2021.



DIVISION OF FAMILY RESOURCES

Monthly Management Report

Reporting Month: April 2022

Location: Statewide

SUPPLEMENTAL NUTRITION ASSISTANCE PROGRAM (SNAP)

	April 2022	March 2022	April 2021	Annual Change
Total issuance	\$153,504,685	\$156,060,367	\$145,723,961	5.34%
Number of households receiving SNAP benefits	292,629	292,997	301,214	-2.85%
Number of recipients	623,082	624,895	645,344	-3.45%
Average issuance per household	\$524.57	\$532.63	\$483.79	8.43%
Average issuance per recipient	\$246.36	\$249.74	\$225.81	9.10%
Number of Applications	20,050	22,528	15,509	29.28%



DIVISION OF FAMILY RESOURCES

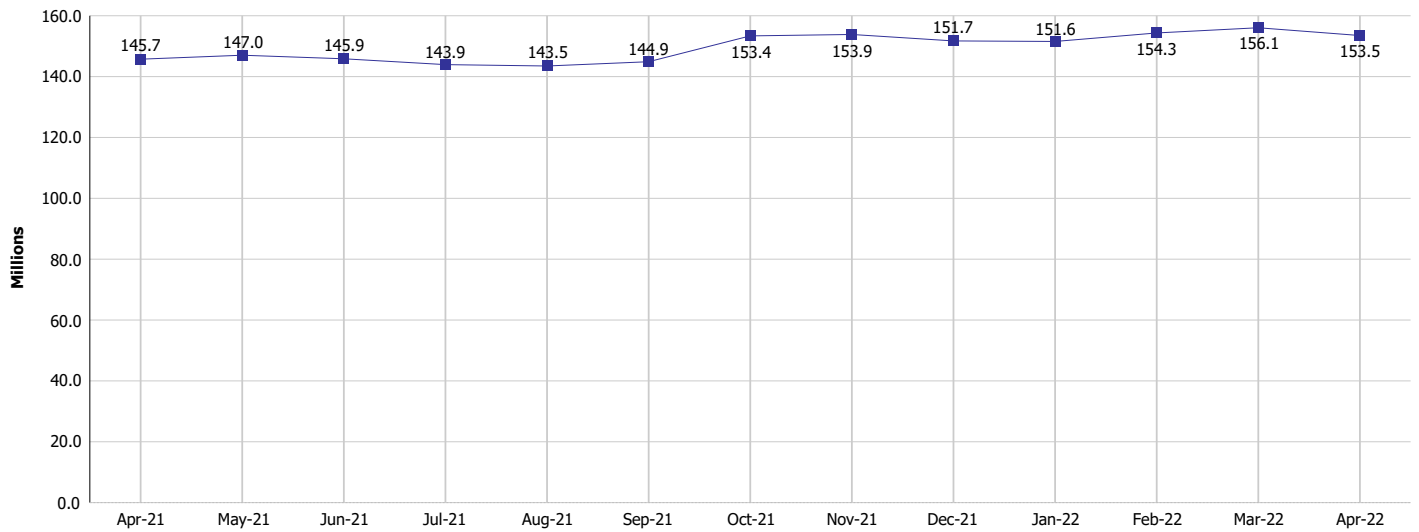
Monthly Management Report

Reporting Month: April 2022

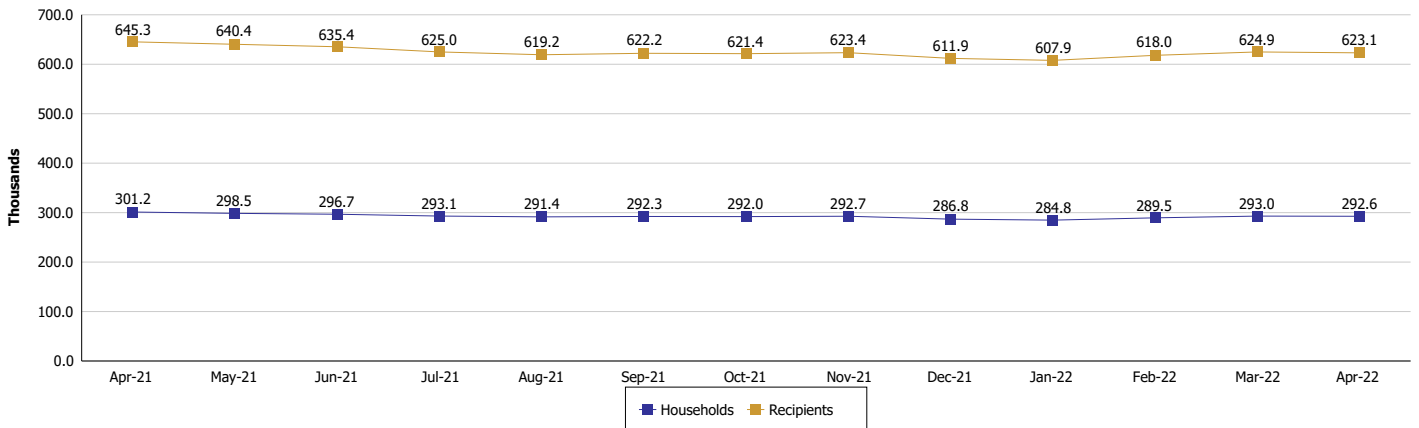
Location: Statewide

SUPPLEMENTAL NUTRITION ASSISTANCE PROGRAM (SNAP)

SNAP Issuance



SNAP Households and Recipients



Note:

Run Date: May 12, 2022



DIVISION OF FAMILY RESOURCES

Monthly Management Report

Reporting Month: April 2022

Location: Statewide

HIP 2.0 and SNAP

	April 2022	March 2022	April 2021	Annual Change
Total HIP 2.0 Members	776,352	771,028	671,225	15.66%
HIP Members also SNAP Recipients	186,809	187,567	191,428	-2.41%
Percentage HIP Members SNAP Recipients	24.1%	24.3%	28.5%	-4.46
HIP Members SNAP ABAWDs	0	0	0	0%
Percentage HIP Members SNAP ABAWDs	0	0	0	0.0



DIVISION OF FAMILY RESOURCES

Monthly Management Report

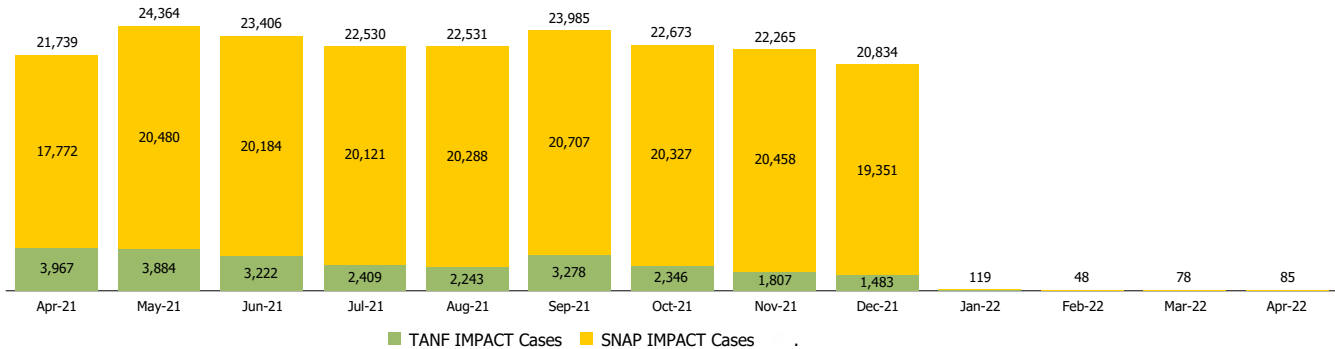
Reporting Month: April 2022

Location: Statewide

INDIANA MANPOWER PLACEMENT AND COMPREHENSIVE TRAINING (IMPACT)

	April 2022	March 2022	April 2021	Annual Change
Number of IMPACT cases	85	78	21,739	-99.61%
Number of TANF IMPACT adults	33	33	3,967	-99.17%
Number of SNAP IMPACT Cases	52	45	17,772	-99.71%
Total number of adults employed	2,986	3,035	1,820	64.07%
Number of TANF IMPACT adults newly employed (within past 30 days)	48	62	151	-68.21%
Number of SNAP IMPACT adults employed	2,938	2,973	1,669	76.03%
Total number of adults ineligible due to employment	2,470	2,065	3,087	-19.99%
Number of TANF adults ineligible due to employment	28	24	41	-31.71%
Number of SNAP adults ineligible due to employment	2,442	2,041	3,046	-19.83%

IMPACT Caseloads
(SNAP, TANF, Total Caseload)



Note:

Effective January 2022, these numbers have been adjusted to reflect only those actually participating in IMPACT.