



## DIVISION OF FAMILY RESOURCES

# Monthly Management Report August 2016

### State of Indiana

Michael R. Pence  
Governor

### Family and Social Services Administration

John J. Wernert, M.D.  
Secretary

### Division of Family Resources

Adrienne Shields  
Director

For questions regarding data on this report contact:  
[office.Communications@fssa.IN.gov](mailto:office.Communications@fssa.IN.gov)



## State of Indiana

Published September 2016



## DIVISION OF FAMILY RESOURCES

### Monthly Management Report

Reporting Month: August 2016

Location: Statewide

#### TEMPORARY ASSISTANCE FOR NEEDY FAMILIES (TANF)

Child-Only and One-Parent Families	August 2016	July 2016	August 2015	Annual Change
Number of families receiving TANF Grants	7,357	7,379	8,106	-9.24%
Total number of grant recipients	15,331	15,251	17,064	-10.16%
Number of adult grant recipients	2,262	2,256	2,660	-14.96%
Number of child grant recipients	13,069	12,995	14,404	-9.27%
Total payments	\$1,389,995	\$1,397,566	\$1,543,275	-9.93%
Average payment per case	\$188.94	\$189.40	\$190.39	-0.76%
Average payment per recipient	\$90.67	\$91.64	\$90.44	0.25%
Number of cases with benefits reduced to zero	195	179	248	-21.37%
Number of recipients with benefits reduced to zero	421	384	545	-22.75%
Number of adult recipients with benefit reduced to zero	102	93	130	-21.54%
Number of child recipients with benefit reduced to zero	319	291	415	-23.13%

Two-Parent Families	August 2016	July 2016	August 2015	Annual Change
Number of families receiving TANF Grants	435	442	498	-12.65%
Total number of grant recipients	1,796	1,812	2,046	-12.22%
Number of adult grant recipients	683	694	755	-9.54%
Number of child grant recipients	1,113	1,118	1,291	-13.79%
Total payments	\$97,641	\$101,133	\$105,740	-7.66%
Average payment per case	\$224.46	\$228.81	\$212.33	5.71%
Average payment per recipient	\$54.37	\$55.81	\$51.68	5.19%
Number of cases with benefits reduced to zero	19	17	24	-20.83%
Number of recipients with benefits reduced to zero	66	59	97	-31.96%
Number of adult recipients with benefit reduced to zero	29	26	40	-27.50%
Number of child recipients with benefit reduced to zero	37	33	57	-35.09%

**Note:**

All data July 2014 and following will be broken out according to the new DFR region structure effective July 1 2014.

Source:



## DIVISION OF FAMILY RESOURCES

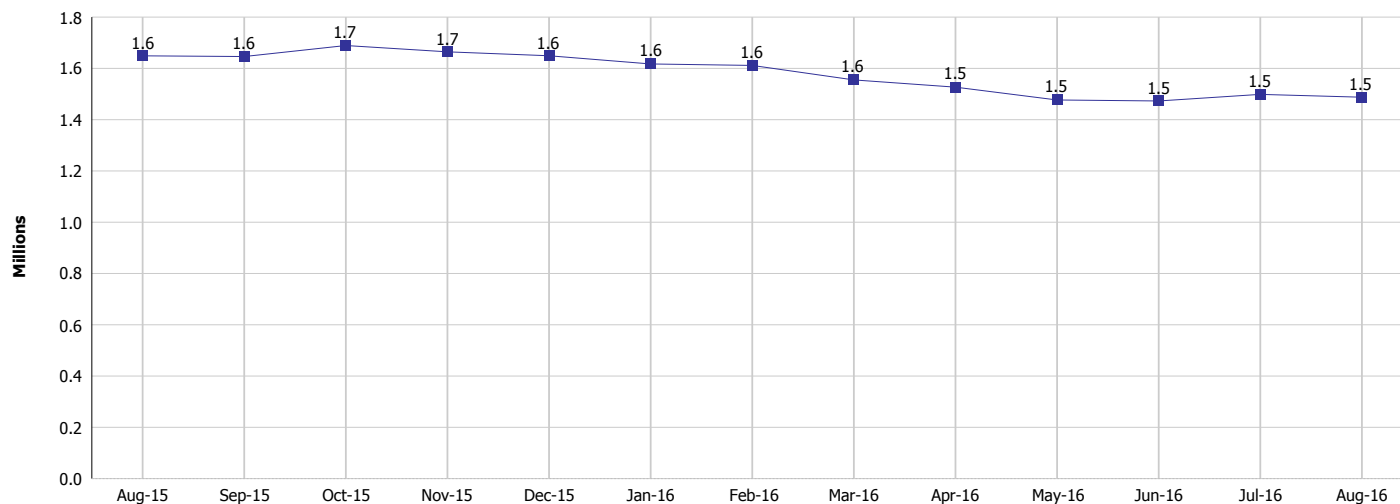
### Monthly Management Report

Reporting Month: August 2016

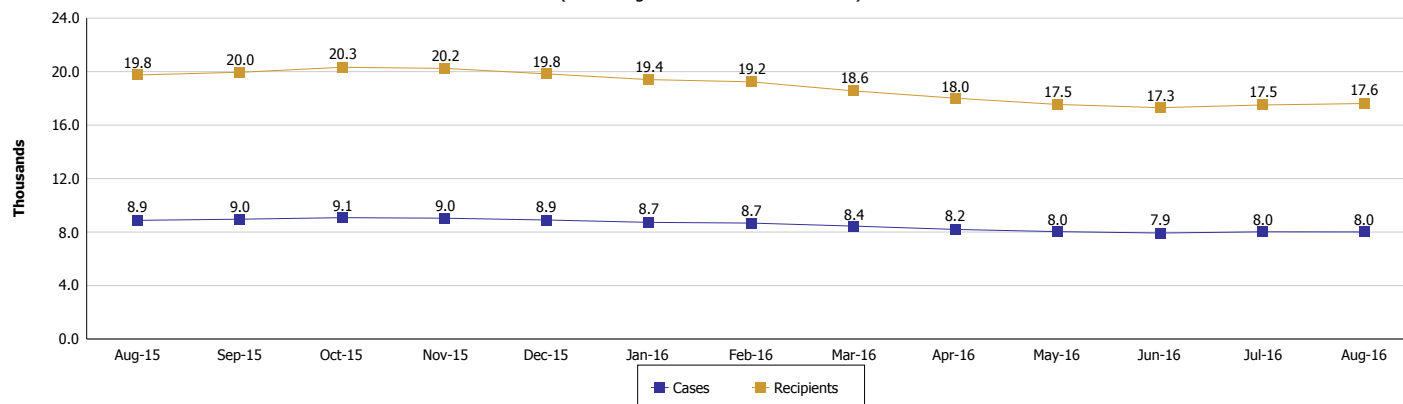
Location: Statewide

#### TEMPORARY ASSISTANCE FOR NEEDY FAMILIES (TANF)

**TANF Cash Assistance**  
(TANF Regular and TANF Two-Parent)



**TANF Cases and Recipients**  
(TANF Regular and TANF Two-Parent)



**Note:**

All data July 2014 and following will be broken out according to the new DFR region structure effective July 1 2014.



## DIVISION OF FAMILY RESOURCES

### Monthly Management Report

Reporting Month: August 2016

Location: Statewide

#### SUPPLEMENTAL NUTRITION ASSISTANCE PROGRAM (SNAP)

	August 2016	July 2016	August 2015	Annual Change
Total issuance	\$86,032,489	\$85,432,794	\$100,681,503	-14.55%
Number of households receiving SNAP benefits	316,331	315,448	368,123	-14.07%
Number of recipients	717,831	714,843	808,144	-11.18%
Average issuance per household	\$271.97	\$270.83	\$273.50	-0.56%
Average issuance per recipient	\$119.85	\$119.51	\$124.58	-3.80%

**Note:**

All data July 2014 and following will be broken out according to the new DFR region structure effective July 1 2014.

#### SNAP ERROR RATES

	April 2016	March 2016	February 2016	Cumulative FFY 2015
FFY Cumulative Positive Error Rate	7.31%	6.62%	6.55%	5.78%
Monthly Positive Error Rate	12.38%	6.91%	8.67%	NA
FFY Cumulative Negative Error Rate	25.27%	25.26%	24.70%	18.13%
Monthly Negative Error Rate	25.40%	28.12%	39.06%	NA

**Note:**

All data July 2014 and following will be broken out according to the new DFR region structure effective July 1 2014.

**Notes:**

Reporting periods for SNAP Error Rates reflect the review period and Federal submission deadline. The month reported above is the month in which an action was taken included in the review sample.

Positive actions are those which produced an issuance of benefits to a household. Negative actions are those which closed or denied benefits to a household.

Error Rate data is reported by the state before the federal agency has accepted and finalized the results. This rate is subject to revision based upon: completion and submission of outstanding reviews; final review corrections; and completion of previously dropped reviews. Monthly numbers are taken from end-of-month totals. The error status of cases may be changed by the State or Federal Review process, which would cause a change that might not be reflected in the previous monthly numbers.



# DIVISION OF FAMILY RESOURCES

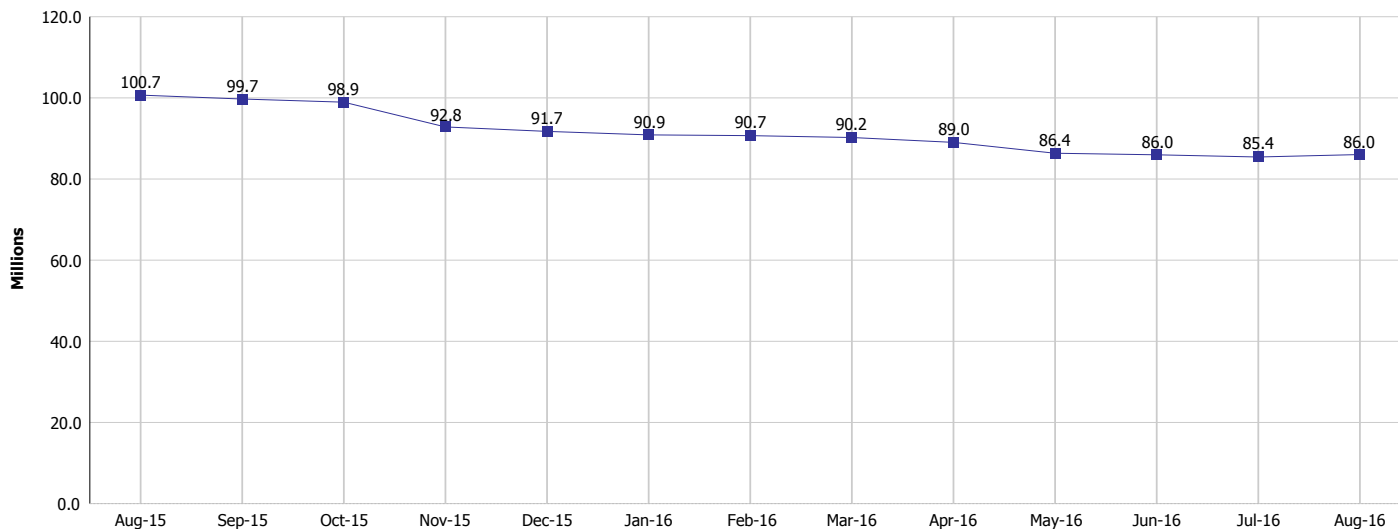
## Monthly Management Report

Reporting Month: August 2016

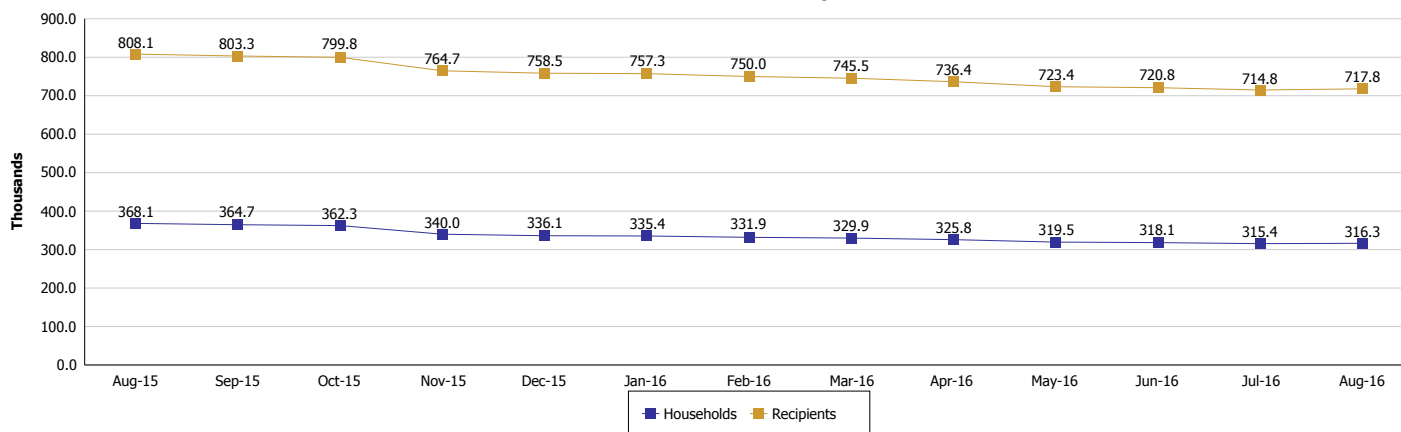
Location: Statewide

### SUPPLEMENTAL NUTRITION ASSISTANCE PROGRAM (SNAP)

#### SNAP Issuance



#### SNAP Households and Recipients



**Note:**

All data July 2014 and following will be broken out according to the new DFR region structure effective July 1 2014.



## DIVISION OF FAMILY RESOURCES

### Monthly Management Report

Reporting Month: August 2016

Location: Statewide

#### HIP 2.0 and SNAP

	August 2016	July 2016	August 2015	Annual Change
Total HIP 2.0 Members	412,310	407,176	318,253	29.55%
HIP Members also SNAP Recipients	163,861	161,907	170,230	-3.74%
Percentage HIP Members SNAP Recipients	39.7%	39.8%	53.5%	13.70%
HIP Members SNAP ABAWDs	5,605	5,542	23,208	-75.85%
Percentage HIP Members SNAP ABAWDs	1.4%	1.4%	7.3%	13.70%

**Note:**

All data July 2014 and following will be broken out according to the new DFR region structure effective July 1 2014.



## DIVISION OF FAMILY RESOURCES

### Monthly Management Report

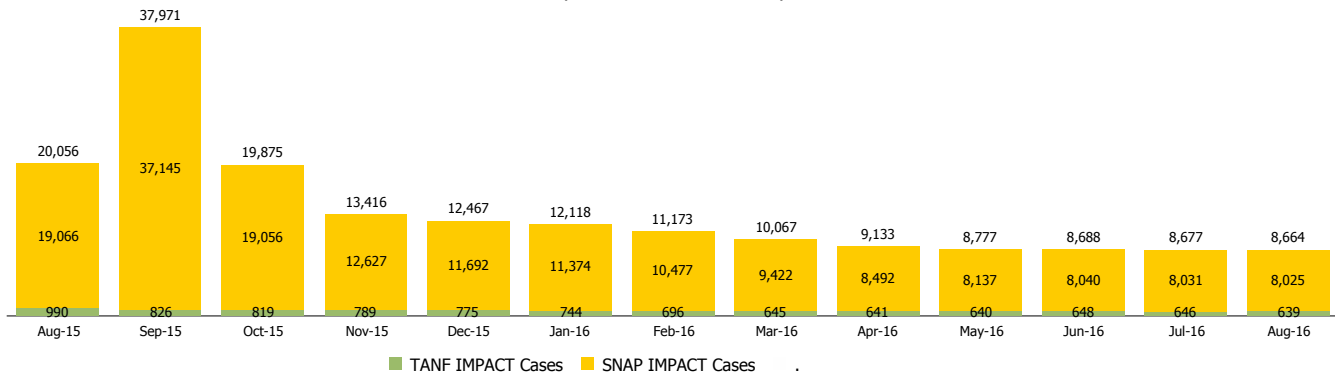
Reporting Month: August 2016

Location: Statewide

#### INDIANA MANPOWER PLACEMENT AND COMPREHENSIVE TRAINING (IMPACT)

	August 2016	July 2016	August 2015	Annual Change
Number of IMPACT cases	8,664	8,677	20,056	-56.80%
Number of TANF IMPACT adults	639	646	990	-35.45%
Number of SNAP IMPACT Cases	8,025	8,031	19,066	-57.91%
Total number of adults employed	1,641	1,363	1,372	19.61%
Number of TANF IMPACT adults newly employed (within past 30 days)	150	132	128	17.19%
Number of SNAP IMPACT adults employed	1,491	1,231	1,244	19.86%
Total number of adults ineligible due to employment	5,939	6,331	6,985	-14.97%
Number of TANF adults ineligible due to employment	22	19	24	-8.33%
Number of SNAP adults ineligible due to employment	5,917	6,312	6,961	-15.00%

**IMPACT Caseloads**  
(SNAP, TANF, Total Caseload)



**Note:**

All data July 2014 and following will be broken out according to the new DFR region structure effective July 1 2014.