



DIVISION OF FAMILY RESOURCES

Monthly Management Report February 2012

State of Indiana
Mitchell E. Daniels, Jr.
Governor

**Family and Social Services
Administration**
Michael Gargano
Secretary

**Division of Family
Resources**
Mike Carr
Interim Director

For questions regarding data on this report contact:
office.Communications@fssa.IN.gov



State of Indiana

Published March 2012



DIVISION OF FAMILY RESOURCES

Monthly Management Report

Reporting Month: February 2012

Location: Statewide

TEMPORARY ASSISTANCE FOR NEEDY FAMILIES (TANF)

Child-Only and One-Parent Families	February 2012	January 2012	February 2011	Annual Change
Number of families receiving TANF Grants	16,447	17,249	26,568	-38.09%
Total number of grant recipients	39,133	41,433	66,490	-41.14%
Number of adult grant recipients	9,262	10,057	19,157	-51.65%
Number of child grant recipients	29,871	31,376	47,333	-36.89%
Total payments	\$3,057,310	\$3,224,684	\$5,465,206	-44.06%
Average payment per case	\$185.89	\$186.95	\$205.71	-9.63%
Average payment per recipient	\$78.13	\$77.83	\$82.20	-4.95%
Number of cases with benefits reduced to zero	714	813	2,424	-70.54%
Number of recipients with benefits reduced to zero	1,677	1,967	6,662	-74.83%
Number of adult recipients with benefit reduced to zero	505	595	2,196	-77.00%
Number of child recipients with benefit reduced to zero	1,172	1,372	4,466	-73.76%

Two-Parent Families	February 2012	January 2012	February 2011	Annual Change
Number of families receiving TANF Grants	1,227	1,312	3,274	-62.52%
Total number of grant recipients	4,985	5,367	13,027	-61.73%
Number of adult grant recipients	1,982	2,154	5,836	-66.04%
Number of child grant recipients	3,003	3,213	7,191	-58.24%
Total payments	\$265,768	\$288,403	\$885,315	-69.98%
Average payment per case	\$216.60	\$219.82	\$270.41	-19.90%
Average payment per recipient	\$53.31	\$53.74	\$67.96	-21.55%
Number of cases with benefits reduced to zero	62	73	425	-85.41%
Number of recipients with benefits reduced to zero	236	265	1,808	-86.95%
Number of adult recipients with benefit reduced to zero	99	114	797	-87.58%
Number of child recipients with benefit reduced to zero	137	151	1,011	-86.45%



DIVISION OF FAMILY RESOURCES

Monthly Management Report

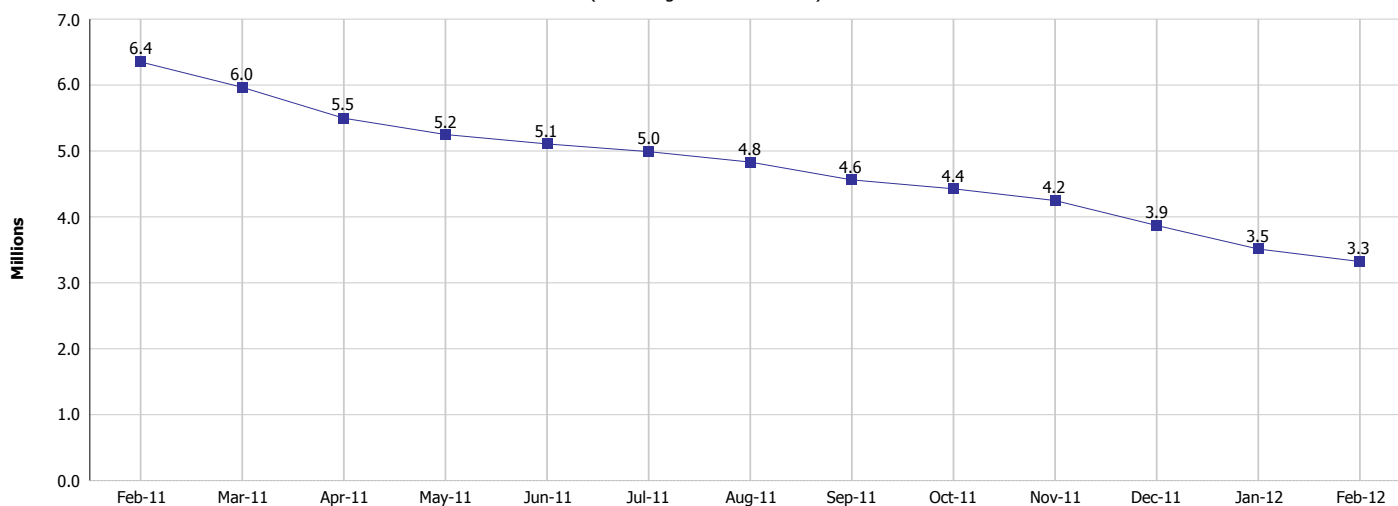
Reporting Month: February 2012

Location: Statewide

TEMPORARY ASSISTANCE FOR NEEDY FAMILIES (TANF)

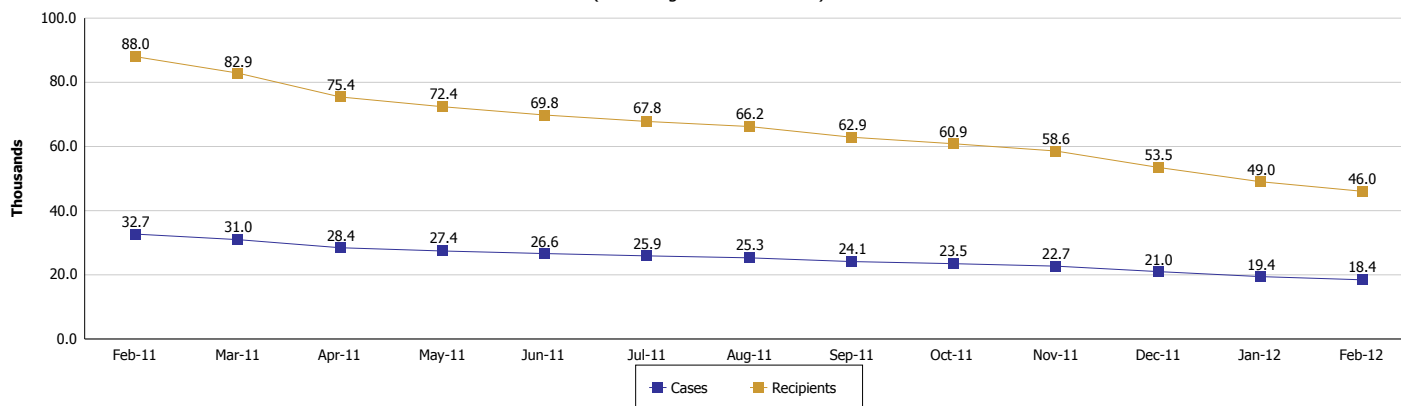
TANF Cash Assistance

(TANF Regular and TANF UP)



TANF Cases and Recipients

(TANF Regular and TANF UP)





DIVISION OF FAMILY RESOURCES

Monthly Management Report

Reporting Month: February 2012

Location: Statewide

SUPPLEMENTAL NUTRITION ASSISTANCE PROGRAM (SNAP)

	February 2012	January 2012	February 2011	Annual Change
Total issuance	\$118,953,211	\$119,770,823	\$114,798,381	3.62%
Number of households receiving SNAP benefits	399,141	400,073	377,083	5.85%
Number of recipients	906,637	909,938	871,570	4.02%
Average issuance per household	\$298.02	\$299.37	\$304.44	-2.11%
Average issuance per recipient	\$131.20	\$131.63	\$131.71	-0.39%

SNAP ERROR RATES

	October 2011	Cumulative FFY 2010
FFY Cumulative Positive Error Rate	4.22%	2.48%
Monthly Positive Error Rate	4.22%	NA
FFY Cumulative Negative Error Rate	1.54%	2.69%
Monthly Negative Error Rate	1.54%	NA

Notes:

Reporting periods for SNAP Error Rates reflect the review period and Federal submission deadline. The month reported above is the month in which an action was taken included in the review sample.

Positive actions are those which produced an issuance of benefits to a household. Negative actions are those which closed or denied benefits to a household.

Error Rate data is reported by the state before the federal agency has accepted and finalized the results. This rate is subject to revision. Monthly numbers are taken from the end of the month totals. Error status of cases may be changed by either State or Federal Review process, which would cause a change that might not be reflected in the previous monthly numbers.



DIVISION OF FAMILY RESOURCES

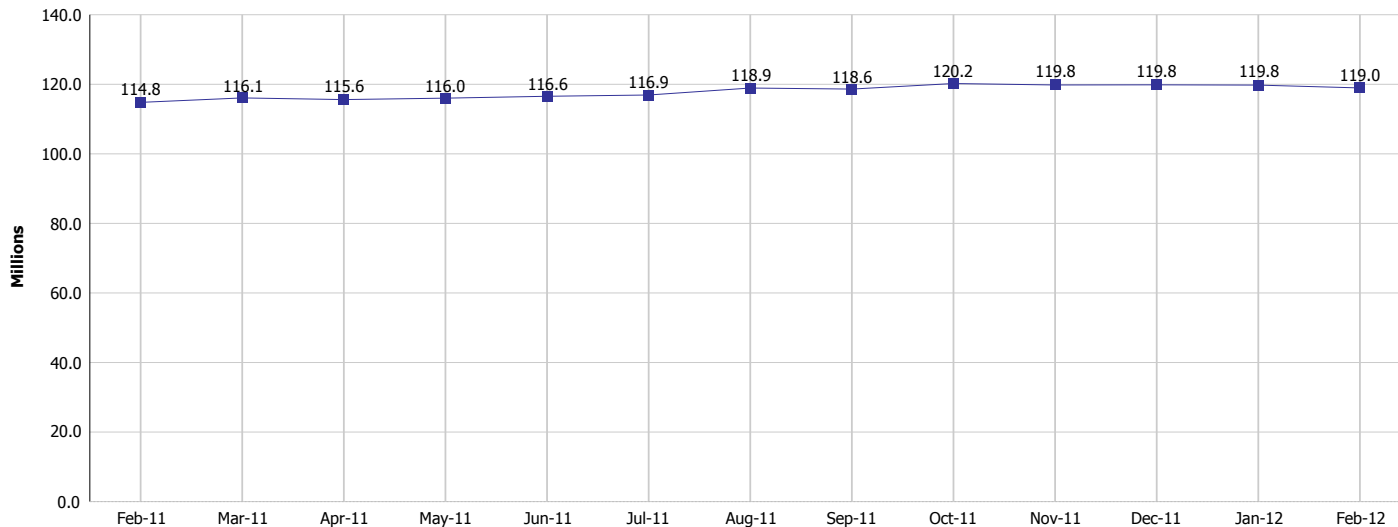
Monthly Management Report

Reporting Month: February 2012

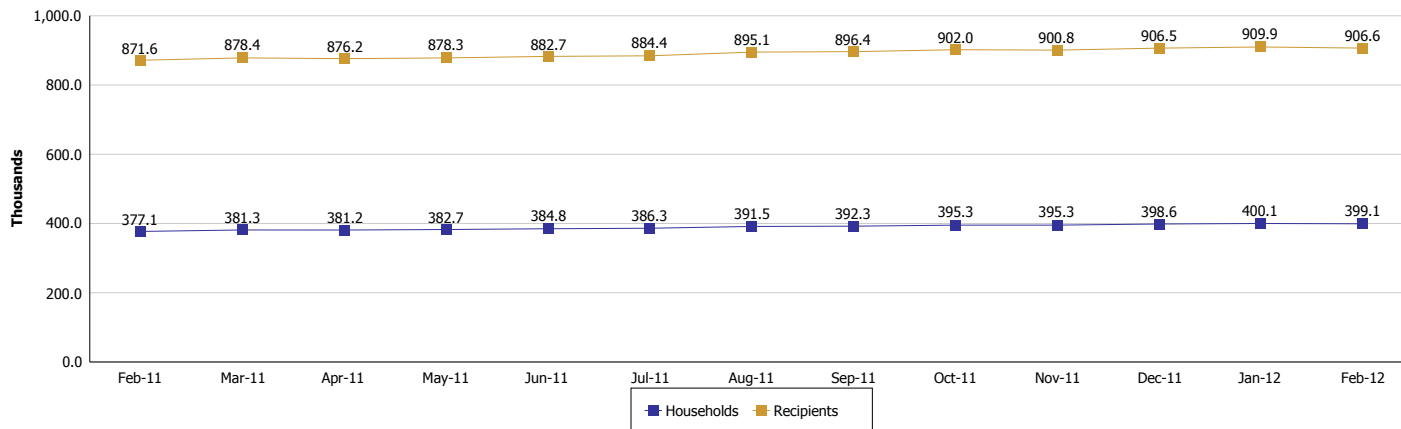
Location: Statewide

SUPPLEMENTAL NUTRITION ASSISTANCE PROGRAM (SNAP)

SNAP Issuance



SNAP Households and Recipients





DIVISION OF FAMILY RESOURCES

Monthly Management Report

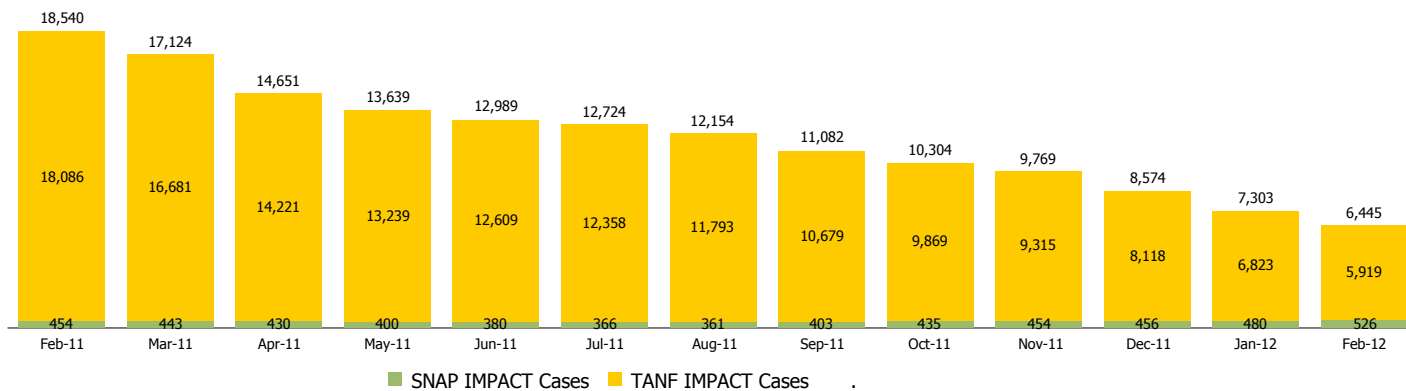
Reporting Month: February 2012

Location: Statewide

INDIANA MANPOWER PLACEMENT AND COMPREHENSIVE TRAINING (IMPACT)

	February 2012	January 2012	February 2011	Annual Change
Number of IMPACT cases	6,445	7,303	18,540	-65.24%
Number of TANF IMPACT Cases	5,919	6,823	18,086	-67.27%
Number of SNAP IMPACT Cases	526	480	454	15.86%
Total number of adults employed	351	374	823	-57.35%
Number of TANF IMPACT adults employed	306	322	762	-59.84%
Number of SNAP IMPACT adults employed	45	52	61	-26.23%
Total number of adults ineligible due to employment	1,621	1,638	1,355	19.63%
Number of TANF adults ineligible due to employment	40	57	64	-37.50%
Number of SNAP adults ineligible due to employment	1,581	1,581	1,291	22.46%

IMPACT Caseloads
(SNAP, TANF, Total Caseload)



Notes:

The methodology used for counting the number of TANF IMPACT cases changed in June 2010 to show all individuals referred to IMPACT for services.

Beginning with May 2010 the SNAP IMPACT program became a voluntary program. This change resulted in a substantial reduction in the number of IMPACT cases.



DIVISION OF FAMILY RESOURCES

Monthly Management Report

Reporting Month: February 2012

Location: Statewide

CHILD CARE

	February 2012	January 2012	February 2011	Annual Change
Total Subsidized Child Care Payments	\$12,085,613	\$11,133,134	\$11,088,534	8.99%
Total Number of CCDF Children	34,146	32,065	31,577	8.14%
Total Number of licensed Child Care Homes	2,884	2,873	3,014	-4.31%
Licensed Capacity of Child Care Homes	36,214	36,090	37,686	-3.91%
Total Number of Licensed CC Centers	602	601	594	1.35%
Licensed Capacity of CC Centers	65,230	65,088	63,694	2.41%
Total Number of Registered Ministries (Capacity not Regulated)	721	730	735	-1.90%