



DIVISION OF FAMILY RESOURCES

Monthly Management Report January 2013

State of Indiana

Michael R. Pence
Governor

Family and Social Services Administration

Debra F. Minott
Secretary

Division of Family Resources

Mike Carr
Interim Director

For questions regarding data on this report contact:
office.Communications@fssa.IN.gov



State of Indiana

Published February 2013



DIVISION OF FAMILY RESOURCES

Monthly Management Report

Reporting Month: January 2013

Location: Statewide

TEMPORARY ASSISTANCE FOR NEEDY FAMILIES (TANF)

Child-Only and One-Parent Families	January 2013	December 2012	January 2012	Annual Change
Number of families receiving TANF Grants	12,537	12,886	17,249	-27.32%
Total number of grant recipients	28,318	29,187	41,433	-31.65%
Number of adult grant recipients	5,786	6,039	10,057	-42.47%
Number of child grant recipients	22,532	23,148	31,376	-28.19%
Total payments	\$2,333,602	\$2,376,484	\$3,224,684	-27.63%
Average payment per case	\$186.14	\$184.42	\$186.95	-0.43%
Average payment per recipient	\$82.41	\$81.42	\$77.83	5.88%
Number of cases with benefits reduced to zero	542	615	813	-33.33%
Number of recipients with benefits reduced to zero	1,239	1,429	1,967	-37.01%
Number of adult recipients with benefit reduced to zero	334	399	595	-43.87%
Number of child recipients with benefit reduced to zero	905	1,030	1,372	-34.04%

Two-Parent Families	January 2013	December 2012	January 2012	Annual Change
Number of families receiving TANF Grants	880	901	1,312	-32.93%
Total number of grant recipients	3,565	3,629	5,367	-33.58%
Number of adult grant recipients	1,406	1,426	2,154	-34.73%
Number of child grant recipients	2,159	2,203	3,213	-32.80%
Total payments	\$194,564	\$194,550	\$288,403	-32.54%
Average payment per case	\$221.10	\$215.93	\$219.82	0.58%
Average payment per recipient	\$54.58	\$53.61	\$53.74	1.56%
Number of cases with benefits reduced to zero	39	37	73	-46.58%
Number of recipients with benefits reduced to zero	151	145	265	-43.02%
Number of adult recipients with benefit reduced to zero	61	54	114	-46.49%
Number of child recipients with benefit reduced to zero	90	91	151	-40.40%



DIVISION OF FAMILY RESOURCES

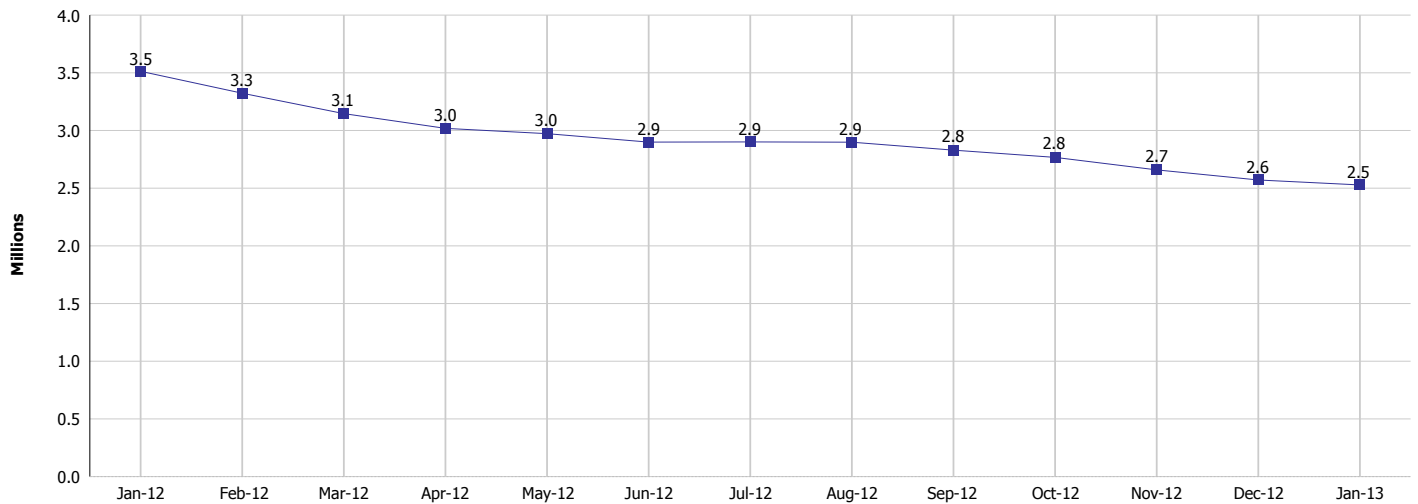
Monthly Management Report

Reporting Month: January 2013

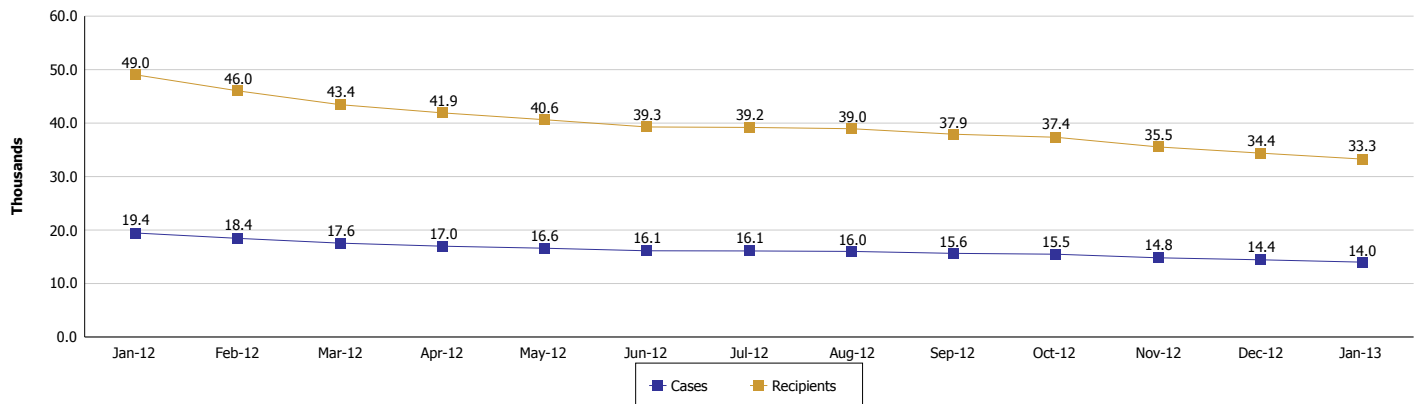
Location: Statewide

TEMPORARY ASSISTANCE FOR NEEDY FAMILIES (TANF)

TANF Cash Assistance
(TANF Regular and TANF UP)



TANF Cases and Recipients
(TANF Regular and TANF UP)





DIVISION OF FAMILY RESOURCES

Monthly Management Report

Reporting Month: January 2013

Location: Statewide

SUPPLEMENTAL NUTRITION ASSISTANCE PROGRAM (SNAP)

	January 2013	December 2012	January 2012	Annual Change
Total issuance	\$121,769,099	\$121,915,958	\$119,770,823	1.67%
Number of households receiving SNAP benefits	415,039	412,681	400,073	3.74%
Number of recipients	927,097	923,808	909,938	1.89%
Average issuance per household	\$293.39	\$295.42	\$299.37	-2.00%
Average issuance per recipient	\$131.34	\$131.97	\$131.63	-0.21%

SNAP ERROR RATES

	September 2012	August 2012	July 2012	Cumulative FFY 2010
FFY Cumulative Positive Error Rate	4.80%	4.79%	4.97%	2.48%
Monthly Positive Error Rate	4.91%	3.16%	4.63%	NA
FFY Cumulative Negative Error Rate	1.20%	1.17%	1.31%	2.69%
Monthly Negative Error Rate	1.47%	0.00%	1.47%	NA

Notes:

Reporting periods for SNAP Error Rates reflect the review period and Federal submission deadline. The month reported above is the month in which an action was taken included in the review sample.

Positive actions are those which produced an issuance of benefits to a household. Negative actions are those which closed or denied benefits to a household.

Error Rate data is reported by the state before the federal agency has accepted and finalized the results. This rate is subject to revision. Monthly numbers are taken from the end of the month totals. Error status of cases may be changed by either State or Federal Review process, which would cause a change that might not be reflected in the previous monthly numbers.



DIVISION OF FAMILY RESOURCES

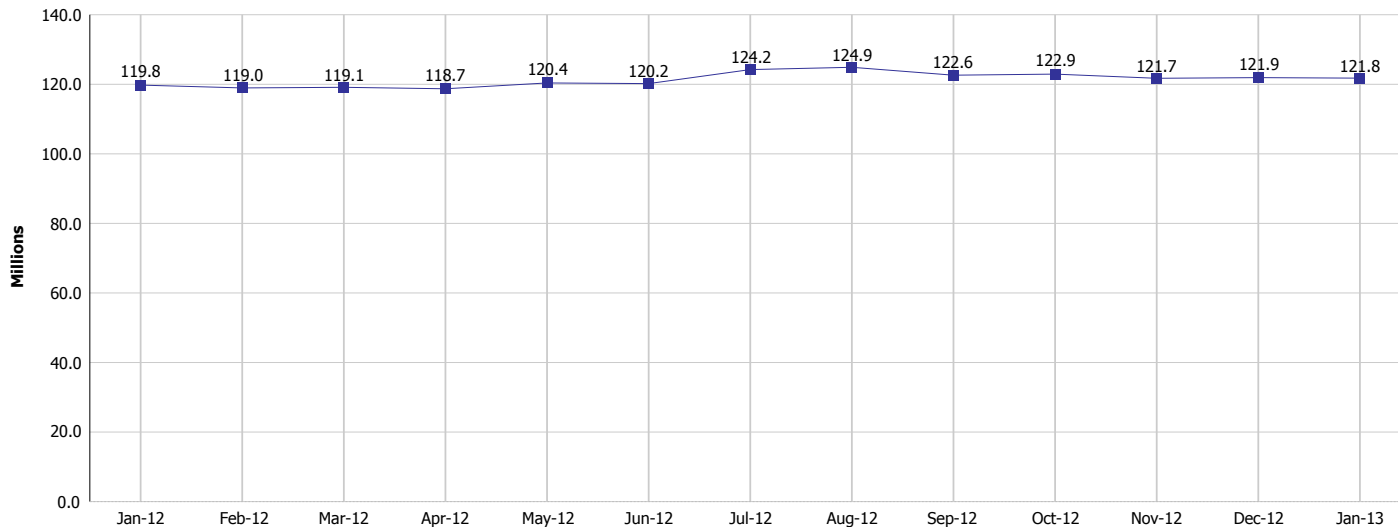
Monthly Management Report

Reporting Month: January 2013

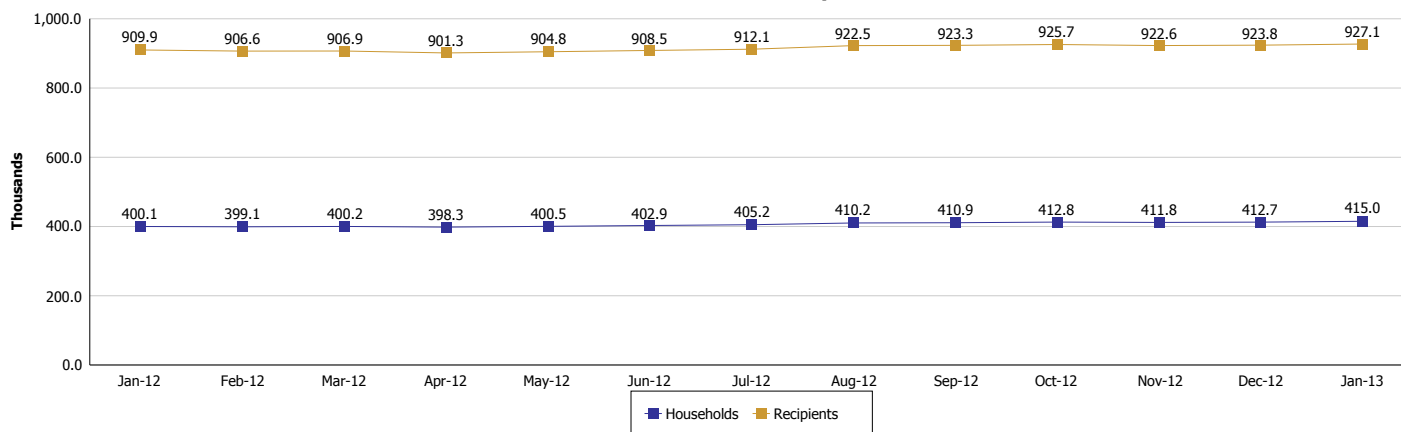
Location: Statewide

SUPPLEMENTAL NUTRITION ASSISTANCE PROGRAM (SNAP)

SNAP Issuance



SNAP Households and Recipients





DIVISION OF FAMILY RESOURCES

Monthly Management Report

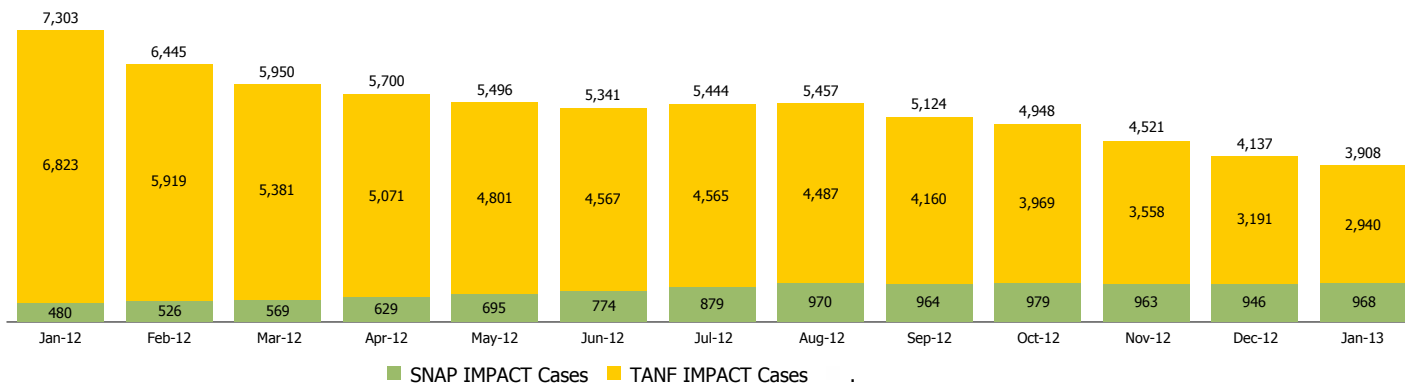
Reporting Month: January 2013

Location: Statewide

INDIANA MANPOWER PLACEMENT AND COMPREHENSIVE TRAINING (IMPACT)

	January 2013	December 2012	January 2012	Annual Change
Number of IMPACT cases	3,908	4,137	7,303	-46.49%
Number of TANF IMPACT Cases	2,940	3,191	6,823	-56.91%
Number of SNAP IMPACT Cases	968	946	480	101.67%
Total number of adults employed	162	262	374	-56.68%
Number of TANF IMPACT adults employed	131	209	322	-59.32%
Number of SNAP IMPACT adults employed	31	53	52	-40.38%
Total number of adults ineligible due to employment	1,876	1,898	1,638	14.53%
Number of TANF adults ineligible due to employment	35	24	57	-38.60%
Number of SNAP adults ineligible due to employment	1,841	1,874	1,581	16.45%

IMPACT Caseloads
(SNAP, TANF, Total Caseload)



Notes:

The methodology used for counting the number of TANF IMPACT cases changed in June 2010 to show all individuals referred to IMPACT for services.

Beginning with May 2010 the SNAP IMPACT program became a voluntary program. This change resulted in a substantial reduction in the number of IMPACT cases.



DIVISION OF FAMILY RESOURCES

Monthly Management Report

Reporting Month: January 2013

Location: Statewide

CHILD CARE

	January 2013	December 2012	January 2012	Annual Change
Total Subsidized Child Care Payments	\$11,463,001	\$12,813,437	\$11,133,134	2.96%
Total Number of CCDF Children	33,103	34,699	32,065	3.24%
Total Number of licensed Child Care Homes	2,821	2,854	2,873	-1.81%
Licensed Capacity of Child Care Homes	35,661	35,969	36,090	-1.19%
Total Number of Licensed CC Centers	593	594	601	-1.33%
Licensed Capacity of CC Centers	64,284	64,471	65,088	-1.24%
Total Number of Registered Ministries (Capacity not Regulated)	683	700	730	-6.44%