



DIVISION OF FAMILY RESOURCES

Monthly Management Report January 2017

State of Indiana

Eric Holcomb
Governor

Family and Social Services Administration

Jennifer Walthall, M.D.
Secretary

Division of Family Resources

Adrienne Shields
Director

For questions regarding data on this report contact:
office.Communications@fssa.IN.gov



State of Indiana

Published February 2017



DIVISION OF FAMILY RESOURCES

Monthly Management Report

Reporting Month: January 2017

Location: Statewide

TEMPORARY ASSISTANCE FOR NEEDY FAMILIES (TANF)

Child-Only and One-Parent Families	Jan 31, 2017	December 2016	January 2016	Annual Change
Number of families receiving TANF Grants	7,263	7,469	7,958	-8.73%
Total number of grant recipients	15,138	15,585	16,730	-9.52%
Number of adult grant recipients	2,181	2,318	2,563	-14.90%
Number of child grant recipients	12,957	13,267	14,167	-8.54%
Total payments	\$1,380,534	\$1,434,343	\$1,496,963	-7.78%
Average payment per case	\$190.08	\$192.04	\$188.11	1.05%
Average payment per recipient	\$91.20	\$92.03	\$89.48	1.92%
Number of cases with benefits reduced to zero	123	122	213	-42.25%
Number of recipients with benefits reduced to zero	245	248	462	-46.97%
Number of adult recipients with benefit reduced to zero	56	60	102	-45.10%
Number of child recipients with benefit reduced to zero	189	188	360	-47.50%

Two-Parent Families	Jan 31, 2017	December 2016	January 2016	Annual Change
Number of families receiving TANF Grants	455	464	534	-14.79%
Total number of grant recipients	1,952	1,989	2,144	-8.96%
Number of adult grant recipients	726	746	851	-14.69%
Number of child grant recipients	1,226	1,243	1,293	-5.18%
Total payments	\$109,994	\$113,497	\$120,361	-8.61%
Average payment per case	\$241.75	\$244.61	\$225.40	7.25%
Average payment per recipient	\$56.35	\$57.06	\$56.14	0.38%
Number of cases with benefits reduced to zero	12	11	19	-36.84%
Number of recipients with benefits reduced to zero	39	32	68	-42.65%
Number of adult recipients with benefit reduced to zero	18	14	27	-33.33%
Number of child recipients with benefit reduced to zero	21	18	41	-48.78%

Note:

All data July 2014 and following will be broken out according to the new DFR region structure effective July 1 2014.

Source:



DIVISION OF FAMILY RESOURCES

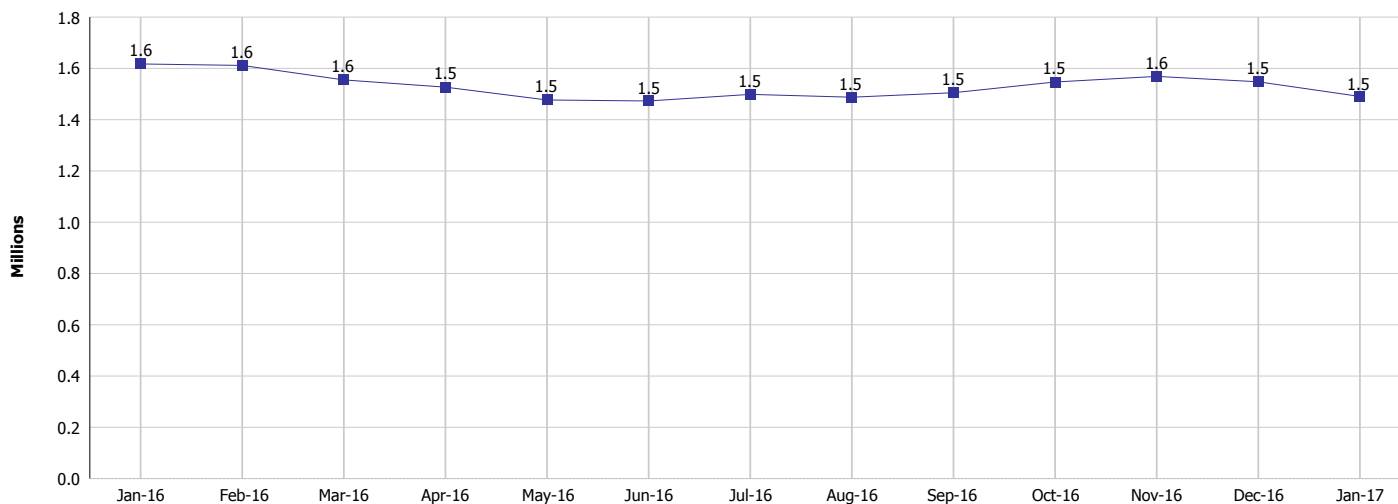
Monthly Management Report

Reporting Month: January 2017

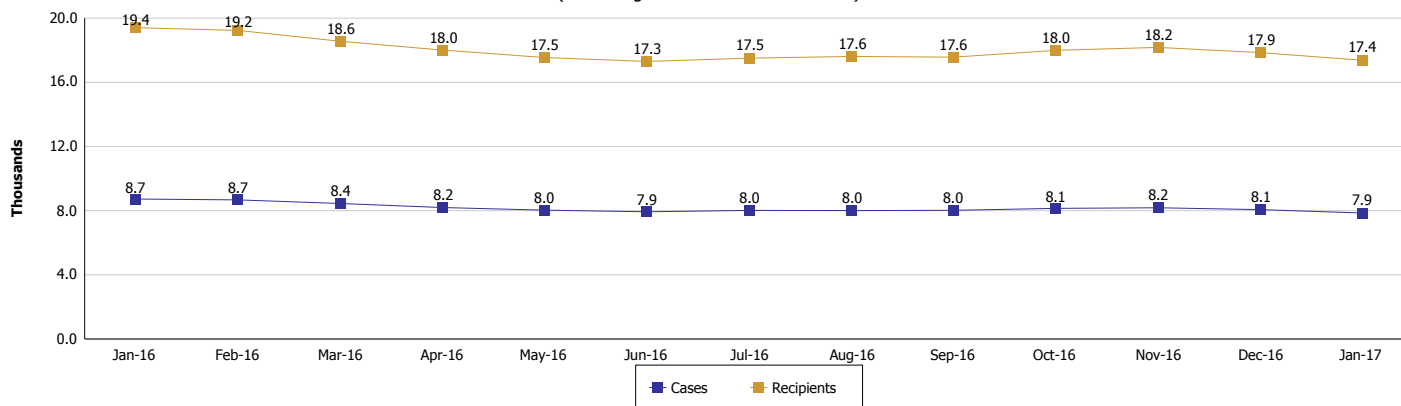
Location: Statewide

TEMPORARY ASSISTANCE FOR NEEDY FAMILIES (TANF)

TANF Cash Assistance
(TANF Regular and TANF Two-Parent)



TANF Cases and Recipients
(TANF Regular and TANF Two-Parent)



Note:

All data July 2014 and following will be broken out according to the new DFR region structure effective July 1 2014.



DIVISION OF FAMILY RESOURCES

Monthly Management Report

Reporting Month: January 2017

Location: Statewide

SUPPLEMENTAL NUTRITION ASSISTANCE PROGRAM (SNAP)

	January 2017	December 2016	January 2016	Annual Change
Total issuance	\$80,418,853	\$81,682,191	\$90,882,700	-11.51%
Number of households receiving SNAP benefits	301,483	305,550	335,365	-10.10%
Number of recipients	682,118	692,024	757,280	-9.93%
Average issuance per household	\$266.74	\$267.33	\$271.00	-1.57%
Average issuance per recipient	\$117.90	\$118.03	\$120.01	-1.76%

Note:

All data July 2014 and following will be broken out according to the new DFR region structure effective July 1 2014.

SNAP ERROR RATES

	September 2016	August 2016	July 2016	Cumulative FFY 2015
FFY Cumulative Positive Error Rate	6.94%	6.79%	7.19%	5.78%
Monthly Positive Error Rate	8.56%	2.19%	11.55%	NA
FFY Cumulative Negative Error Rate	27.12%	26.58%	25.23%	18.13%
Monthly Negative Error Rate	32.84%	39.13%	27.87%	NA

Note:

All data July 2014 and following will be broken out according to the new DFR region structure effective July 1 2014.

Notes:

Reporting periods for SNAP Error Rates reflect the review period and Federal submission deadline. The month reported above is the month in which an action was taken included in the review sample.

Positive actions are those which produced an issuance of benefits to a household. Negative actions are those which closed or denied benefits to a household.

Error Rate data is reported by the state before the federal agency has accepted and finalized the results. This rate is subject to revision based upon: completion and submission of outstanding reviews; final review corrections; and completion of previously dropped reviews. Monthly numbers are taken from end-of-month totals. The error status of cases may be changed by the State or Federal Review process, which would cause a change that might not be reflected in the previous monthly numbers.



DIVISION OF FAMILY RESOURCES

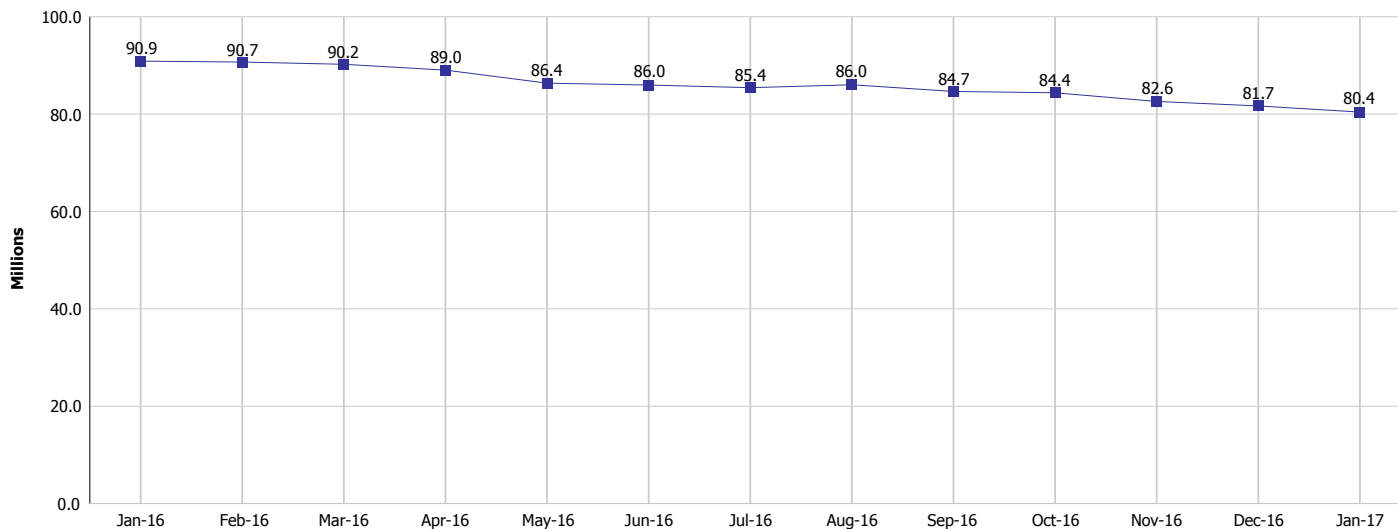
Monthly Management Report

Reporting Month: January 2017

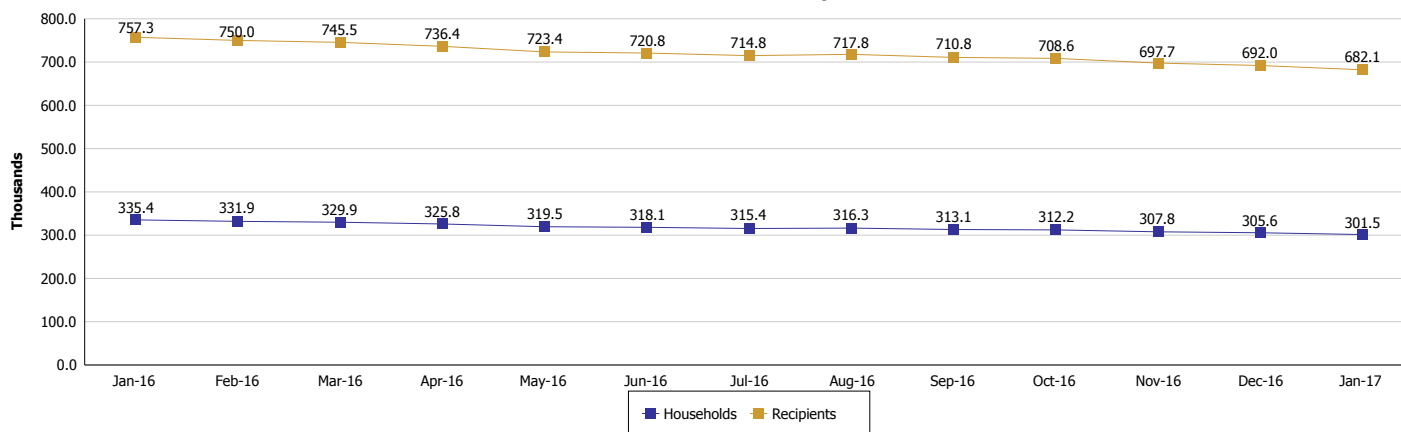
Location: Statewide

SUPPLEMENTAL NUTRITION ASSISTANCE PROGRAM (SNAP)

SNAP Issuance



SNAP Households and Recipients



Note:

All data July 2014 and following will be broken out according to the new DFR region structure effective July 1 2014.



DIVISION OF FAMILY RESOURCES

Monthly Management Report

Reporting Month: January 2017

Location: Statewide

HIP 2.0 and SNAP

	January 2017	December 2016	January 2016	Annual Change
Total HIP 2.0 Members	434,167	428,382	380,708	14.04%
HIP Members also SNAP Recipients	158,216	159,281	167,075	-5.30%
Percentage HIP Members SNAP Recipients	36.4%	37.2%	43.9%	7.59%
HIP Members SNAP ABAWDs	5,199	5,043	7,620	-31.77%
Percentage HIP Members SNAP ABAWDs	1.2%	1.2%	2.0%	7.59%

Note:

All data July 2014 and following will be broken out according to the new DFR region structure effective July 1 2014.



DIVISION OF FAMILY RESOURCES

Monthly Management Report

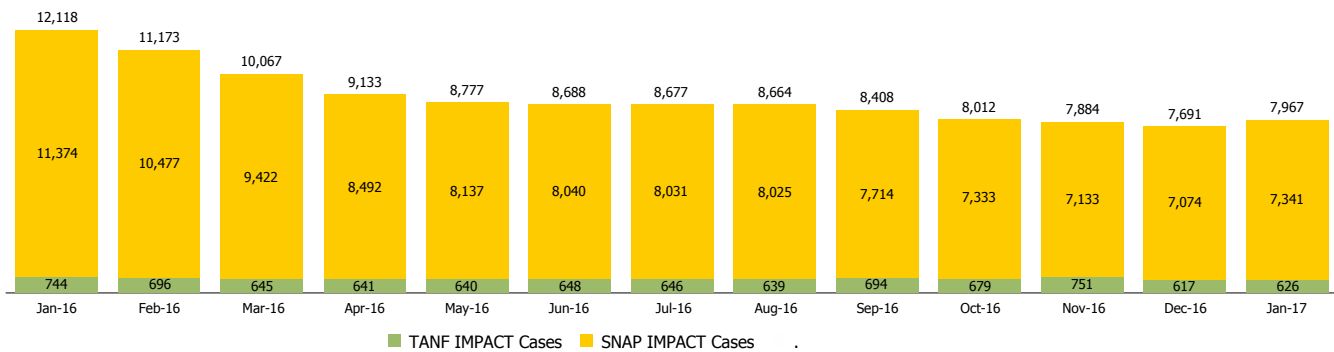
Reporting Month: January 2017

Location: Statewide

INDIANA MANPOWER PLACEMENT AND COMPREHENSIVE TRAINING (IMPACT)

	January 2017	December 2016	January 2016	Annual Change
Number of IMPACT cases	7,967	7,691	12,118	-34.25%
Number of TANF IMPACT adults	626	617	744	-15.86%
Number of SNAP IMPACT Cases	7,341	7,074	11,374	-35.46%
Total number of adults employed	1,010	1,205	1,134	-10.93%
Number of TANF IMPACT adults newly employed (within past 30 days)	82	121	94	-12.77%
Number of SNAP IMPACT adults employed	928	1,084	1,040	-10.77%
Total number of adults ineligible due to employment	5,967	5,608	6,901	-13.53%
Number of TANF adults ineligible due to employment	22	25	28	-21.43%
Number of SNAP adults ineligible due to employment	5,945	5,583	6,873	-13.50%

IMPACT Caseloads
(SNAP, TANF, Total Caseload)



Note:

All data July 2014 and following will be broken out according to the new DFR region structure effective July 1 2014.