



DIVISION OF FAMILY RESOURCES

Monthly Management Report May 2011

State of Indiana
Mitchell E. Daniels, Jr.
Governor

**Family and Social Services
Administration**
Michael Gargano
Secretary

**Division of Family
Resources**
Mike Carr
Interim Director

For questions regarding data on this report contact:
office.Communications@fssa.IN.gov



State of Indiana

Published June 2011



DIVISION OF FAMILY RESOURCES

Monthly Management Report

Reporting Month: May 2011

Location: Statewide

TEMPORARY ASSISTANCE FOR NEEDY FAMILIES (TANF)

| TANF - REGULAR | May 2011 | April 2011 | May 2010 | Annual Change |
|---|-----------------|-------------------|-----------------|----------------------|
| Number of families receiving TANF Grants | 22,613 | 23,487 | 30,396 | -25.61% |
| Total number of grant recipients | 55,688 | 58,068 | 77,454 | -28.10% |
| Number of adult grant recipients | 15,302 | 16,188 | 22,833 | -32.98% |
| Number of child grant recipients | 40,386 | 41,880 | 54,621 | -26.06% |
| Total payments | \$4,611,124 | \$4,806,525 | \$6,359,056 | -27.49% |
| Average payment per case | \$203.91 | \$204.65 | \$209.21 | -2.53% |
| Average payment per recipient | \$82.80 | \$82.77 | \$82.10 | 0.85% |
| Number of cases with benefits reduced to zero | 2,073 | 1,998 | 2,764 | -25.00% |
| Number of recipients with benefits reduced to zero | 5,698 | 5,485 | 7,706 | -26.06% |
| Number of adult recipients with benefit reduced to zero | 1,852 | 1,780 | 2,552 | -27.43% |
| Number of child recipients with benefit reduced to zero | 3,846 | 3,705 | 5,154 | -25.38% |

| TANF - UNEMPLOYED PARENT | May 2011 | April 2011 | May 2010 | Annual Change |
|---|-----------------|-------------------|-----------------|----------------------|
| Number of families receiving TANF Grants | 2,429 | 2,623 | 4,218 | -42.41% |
| Total number of grant recipients | 9,671 | 10,478 | 17,016 | -43.17% |
| Number of adult grant recipients | 4,231 | 4,586 | 7,625 | -44.51% |
| Number of child grant recipients | 5,440 | 5,892 | 9,391 | -42.07% |
| Total payments | \$638,306 | \$690,661 | \$1,160,679 | -45.01% |
| Average payment per case | \$262.79 | \$263.31 | \$275.17 | -4.50% |
| Average payment per recipient | \$66.00 | \$65.92 | \$68.21 | -3.24% |
| Number of cases with benefits reduced to zero | 319 | 337 | 527 | -39.47% |
| Number of recipients with benefits reduced to zero | 1,345 | 1,413 | 2,179 | -38.27% |
| Number of adult recipients with benefit reduced to zero | 589 | 630 | 1,006 | -41.45% |
| Number of child recipients with benefit reduced to zero | 756 | 783 | 1,173 | -35.55% |



DIVISION OF FAMILY RESOURCES

Monthly Management Report

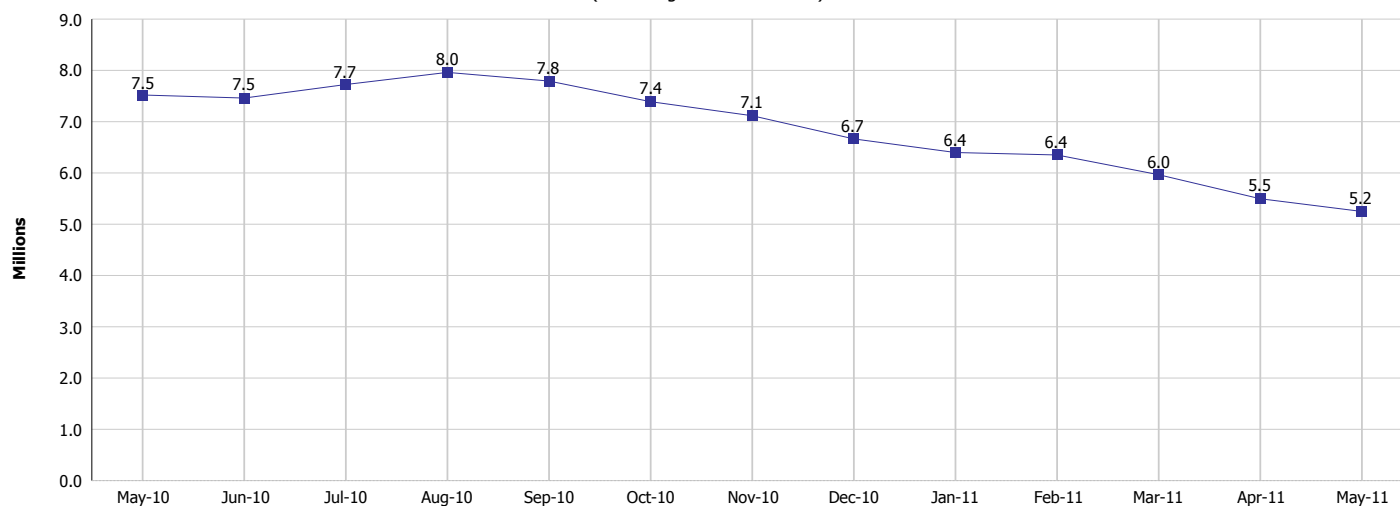
Reporting Month: May 2011

Location: Statewide

TEMPORARY ASSISTANCE FOR NEEDY FAMILIES (TANF)

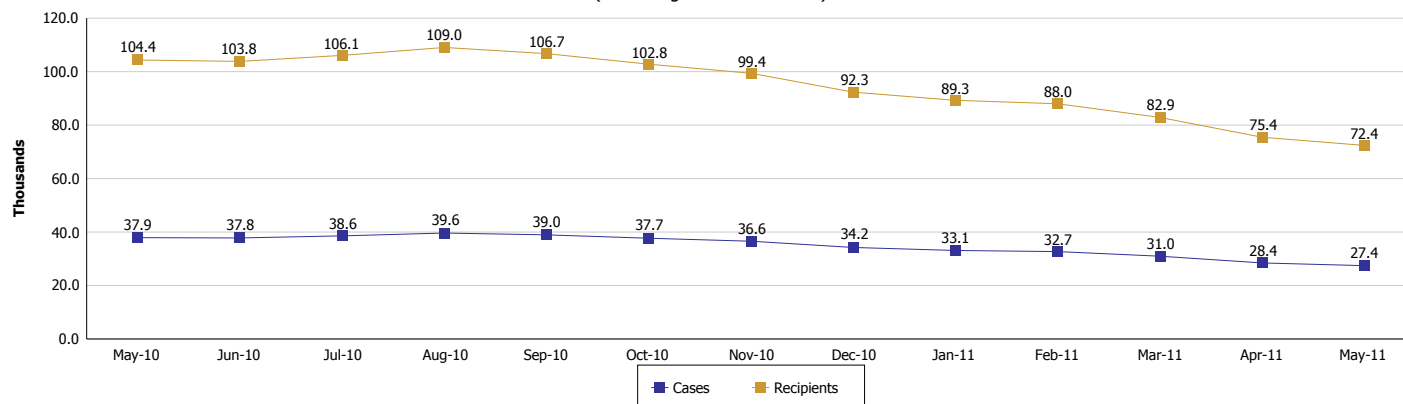
TANF Cash Assistance

(TANF Regular and TANF UP)



TANF Cases and Recipients

(TANF Regular and TANF UP)





DIVISION OF FAMILY RESOURCES

Monthly Management Report

Reporting Month: May 2011

Location: Statewide

SUPPLEMENTAL NUTRITION ASSISTANCE PROGRAM (SNAP)

| | May 2011 | April 2011 | May 2010 | Annual Change |
|--|---------------|---------------|---------------|---------------|
| Total issuance | \$116,011,883 | \$115,601,205 | \$107,215,429 | 8.20% |
| Number of households receiving SNAP benefits | 382,681 | 381,162 | 349,619 | 9.46% |
| Number of recipients | 878,296 | 876,169 | 814,120 | 7.88% |
| Average issuance per household | \$303.16 | \$303.29 | \$306.66 | -1.14% |
| Average issuance per recipient | \$132.09 | \$131.94 | \$131.69 | 0.30% |

SNAP ERROR RATES

| | January 2011 | December 2010 | November 2010 | Cumulative FFY 2010 |
|------------------------------------|--------------|---------------|---------------|---------------------|
| FFY Cumulative Positive Error Rate | 3.62% | 4.02% | 3.87% | 2.48% |
| Monthly Positive Error Rate | 2.34% | 4.30% | 2.29% | NA |
| FFY Cumulative Negative Error Rate | 3.57% | 2.58% | 1.56% | 2.69% |
| Monthly Negative Error Rate | 6.90% | 4.55% | 1.61% | NA |

Notes:

Reporting periods for SNAP Error Rates reflect the review period and Federal submission deadline. The month reported above is the month in which an action was taken included in the review sample.

Positive actions are those which produced an issuance of benefits to a household. Negative actions are those which closed or denied benefits to a household.

Error Rate data is reported by the state before the federal agency has accepted and finalized the results. This rate is subject to revision. Monthly numbers are taken from the end of the month totals. Error status of cases may be changed by either State or Federal Review process, which would cause a change that might not be reflected in the previous monthly numbers.



DIVISION OF FAMILY RESOURCES

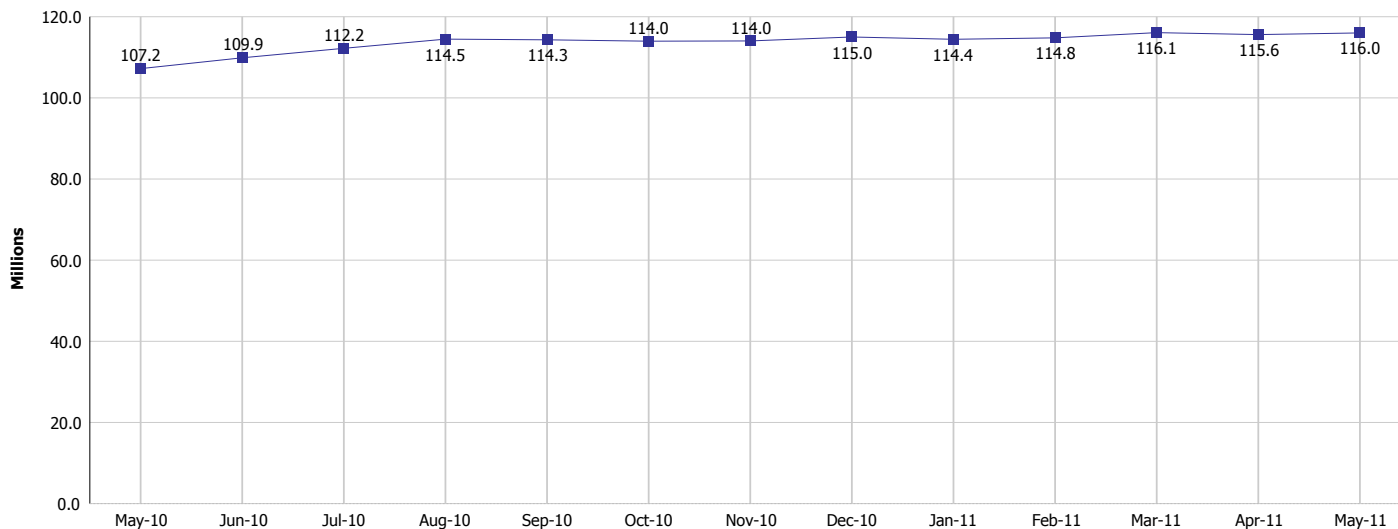
Monthly Management Report

Reporting Month: May 2011

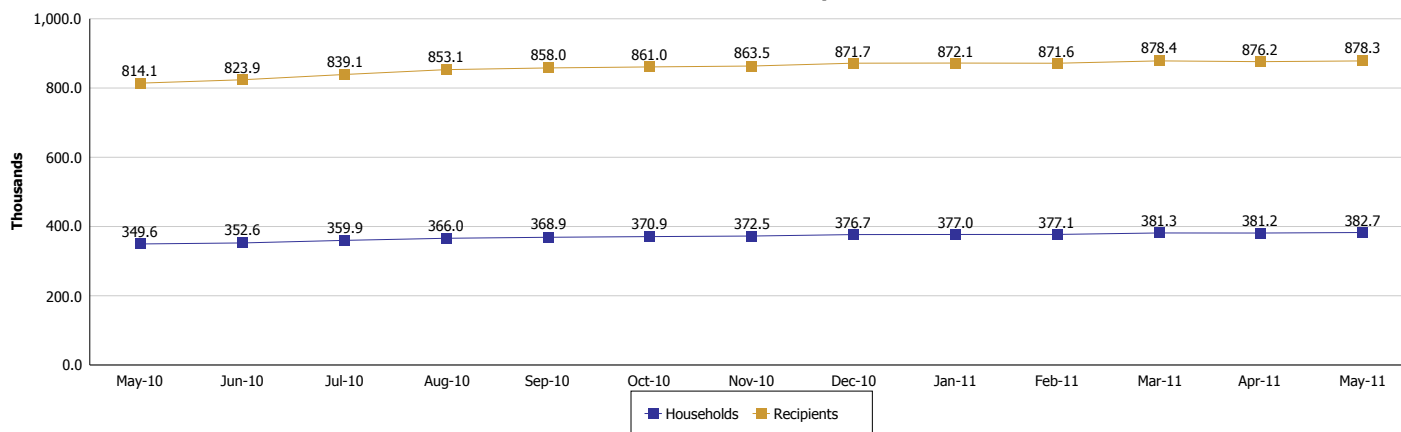
Location: Statewide

SUPPLEMENTAL NUTRITION ASSISTANCE PROGRAM (SNAP)

SNAP Issuance



SNAP Households and Recipients





DIVISION OF FAMILY RESOURCES

Monthly Management Report

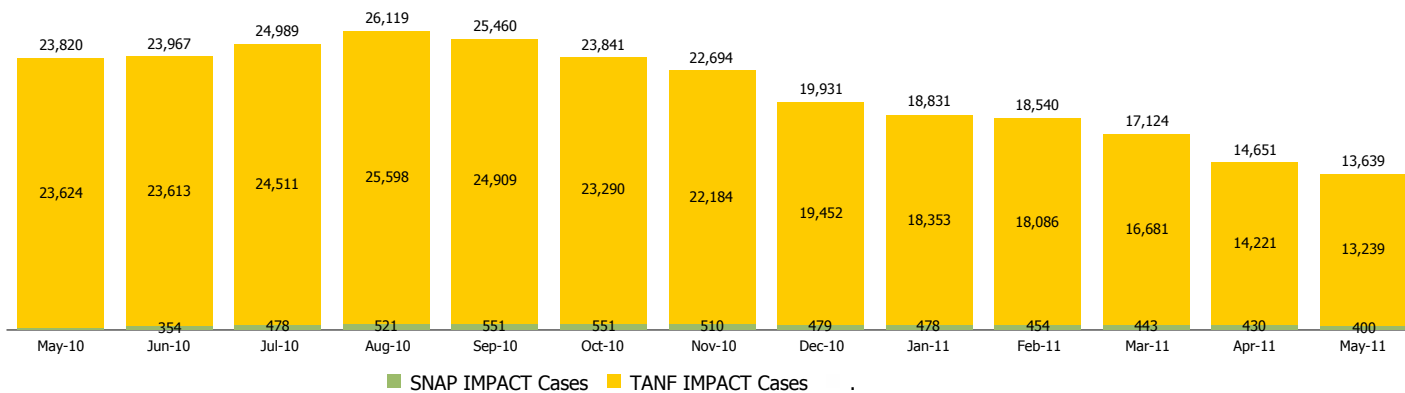
Reporting Month: May 2011

Location: Statewide

INDIANA MANPOWER PLACEMENT AND COMPREHENSIVE TRAINING (IMPACT)

| | May 2011 | April 2011 | May 2010 | Annual Change |
|---|----------|------------|----------|---------------|
| Number of IMPACT cases | 13,639 | 14,651 | 23,820 | -42.74% |
| Number of TANF IMPACT Cases | 13,239 | 14,221 | 23,624 | -43.96% |
| Number of SNAP IMPACT Cases | 400 | 430 | 196 | 104.08% |
| Total number of adults employed | 954 | 1,031 | 1,277 | -25.29% |
| Number of TANF IMPACT adults employed | 888 | 962 | 1,199 | -25.94% |
| Number of SNAP IMPACT adults employed | 66 | 69 | 78 | -15.38% |
| Total number of adults ineligible due to employment | 1,621 | 1,674 | 1,507 | 7.56% |
| Number of TANF adults ineligible due to employment | 68 | 93 | 66 | 3.03% |
| Number of SNAP adults ineligible due to employment | 1,553 | 1,581 | 1,441 | 7.77% |

IMPACT Caseloads
(SNAP, TANF, Total Caseload)



Notes:

The methodology used for counting the number of TANF IMPACT cases changed in June 2010 to show all individuals referred to IMPACT for services.

Beginning with May 2010 the SNAP IMPACT program became a voluntary program. This change resulted in a substantial reduction in the number of IMPACT cases.



DIVISION OF FAMILY RESOURCES

Monthly Management Report

Reporting Month: May 2011

Location: Statewide

CHILD CARE

| | May 2011 | April 2011 | May 2010 | Annual Change |
|--|--------------|--------------|--------------|---------------|
| Total Subsidized Child Care Payments | \$11,527,464 | \$11,255,926 | \$13,172,255 | -12.49% |
| Total Number of CCDF Children | 31,280 | 31,467 | 36,224 | -13.65% |
| Total Number of licensed Child Care Homes | 2,979 | 2,978 | 3,027 | -1.59% |
| Licensed Capacity of Child Care Homes | 37,292 | 37,234 | 37,806 | -1.36% |
| Total Number of Licensed CC Centers | 612 | 609 | 595 | 2.86% |
| Licensed Capacity of CC Centers | 66,089 | 65,895 | 63,641 | 3.85% |
| Total Number of Registered Ministries (Capacity not Regulated) | 737 | 736 | 716 | 2.93% |