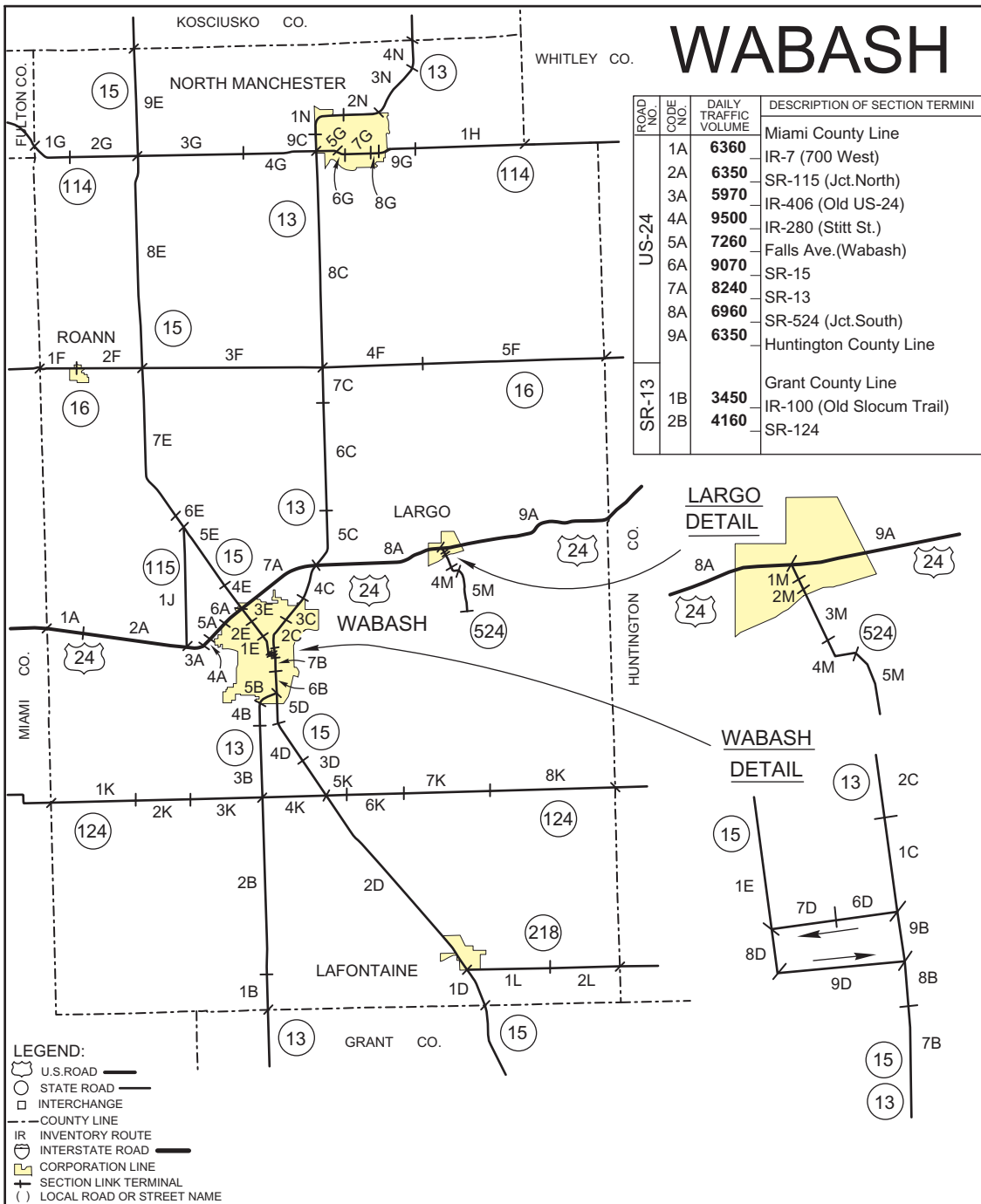


# WABASH



ROAD NO.	CODE NO.	DAILY TRAFFIC VOLUME	DESCRIPTION OF SECTION TERMINI
US-24	1A	6360	Miami County Line
	2A	6350	IR-7 (700 West)
	3A	5970	SR-115 (Jct.North)
	4A	9500	IR-406 (Old US-24)
	5A	7260	IR-280 (Stitt St.)
	6A	9070	Falls Ave.(Wabash)
	7A	8240	SR-15
	8A	6960	SR-13
	9A	6350	SR-524 (Jct.South)
SR-13	1B	3450	Grant County Line
	2B	4160	IR-100 (Old Slocum Trail)
			SR-124

ROAD NO.	CODE NO.	DAILY TRAFFIC VOLUME	DESCRIPTION OF SECTION LINK TERMINI	
SR-13	3B	4150	SR-124	
	4B	4030	IR-34 (France Rd.)(400 South)	
	5B	3500	Vernon St.(Wabash)	
	6B	13320	SR-15 (Jct.South)	
	7B	12500	LaFontaine Ave.(Wabash)	
	8B	17440	Water St.(Wabash)	
	9B	10510	SR-15 Southbound (Canal St.)	
	1C	9960	SR-15 Northbound (Market St.)	
	2C	10600	Hill St.(Wabash)	
	3C	8990	Harrison St.(Wabash)	
	4C	8080	Gillen Ave.(Wabash)	
	5C	6580	US-24	
	6C	5900	IR-58 (200 North)	
SR-15	7C	5460	IR-64 (500 North)	
	8C	5030	SR-16	
	9C	6910	SR-114	
	1N	4200	Ninth St.(North Manchester)	
	2N	5230	Beckley St.(North Manchester)	
	3N	4160	East St.(North Manchester)	
	4N	3410	IR-90(Main St.)(Liberty Mills)	
	1D	5810	Kosciusko County Line	
	2D	6060	Grant County Line	
	3D	7540	SR-218	
	4D	8730	SR-124	
	5D	8470	IR-30 (500 South)	
	SR-16	6D	2830	IR-129(150W)(Walnut Tree Pike)
7D		5060	SR-13 (Jct.South)	
8D		8200	(SR-15 follows SR-13)	
9D		3860	(Begin SR-15 One-way Pair)	
1E		11120	(SR-15 Westbnd on Market St.)	
2E		14490	SR-13 Ahead & SR-15 Behind	
3E		12660	Miami St.(Wabash)	
4E		9680	SR-15 Southbound Lt.(Cass St.)	
5E		6240	(SR-15 South over Cass St.)	
6E		5710	then East over Canal St.)	
7E		4320	SR-15 Northbound (Market St.)	
SR-114		8E	3990	Canal St.(Wabash)
		9E	4020	SR-13 / SR-15 (Wabash St.)
	1F	1300	(End SR-15 One-way Pair)	
	2F	1830	SR-15 Northbound (Market St.)	
	3F	1020	Stitt St.(Wabash)	
	4F	960	Harrison St.(Wabash)	
	5F	790	Gillen Ave.(Wabash)	
	1G	2290	US-24	
	2G	2830	Main St. (Largo)	
	3G	3480	Washington St.(Largo)	
	4G	6420	IR-165 (Durnbaugh Rd.)	
	5G	10430	IR-46 (Division Rd.)	
	6G	9990	IR-158 (Salamonie River State Forest Access Road)	
7G	9220			
8G	6690			
9G	4960			
1H	3550			
SR-115	1J	1250	Whitley County Line	
	1K	940	US-24	
	2K	1130	Main St. (Largo)	
	3K	1420	Washington St.(Largo)	
	4K	1390	IR-165 (Durnbaugh Rd.)	
	5K	2830	IR-46 (Division Rd.)	
	6K	2360	IR-158 (Salamonie River State Forest Access Road)	
	7K	1980		
	8K	1630		
	1L	1430		
	2L	1040		
	1M	2640		
	2M	1960		
3M	1720			
4M	1200			
5M	680			